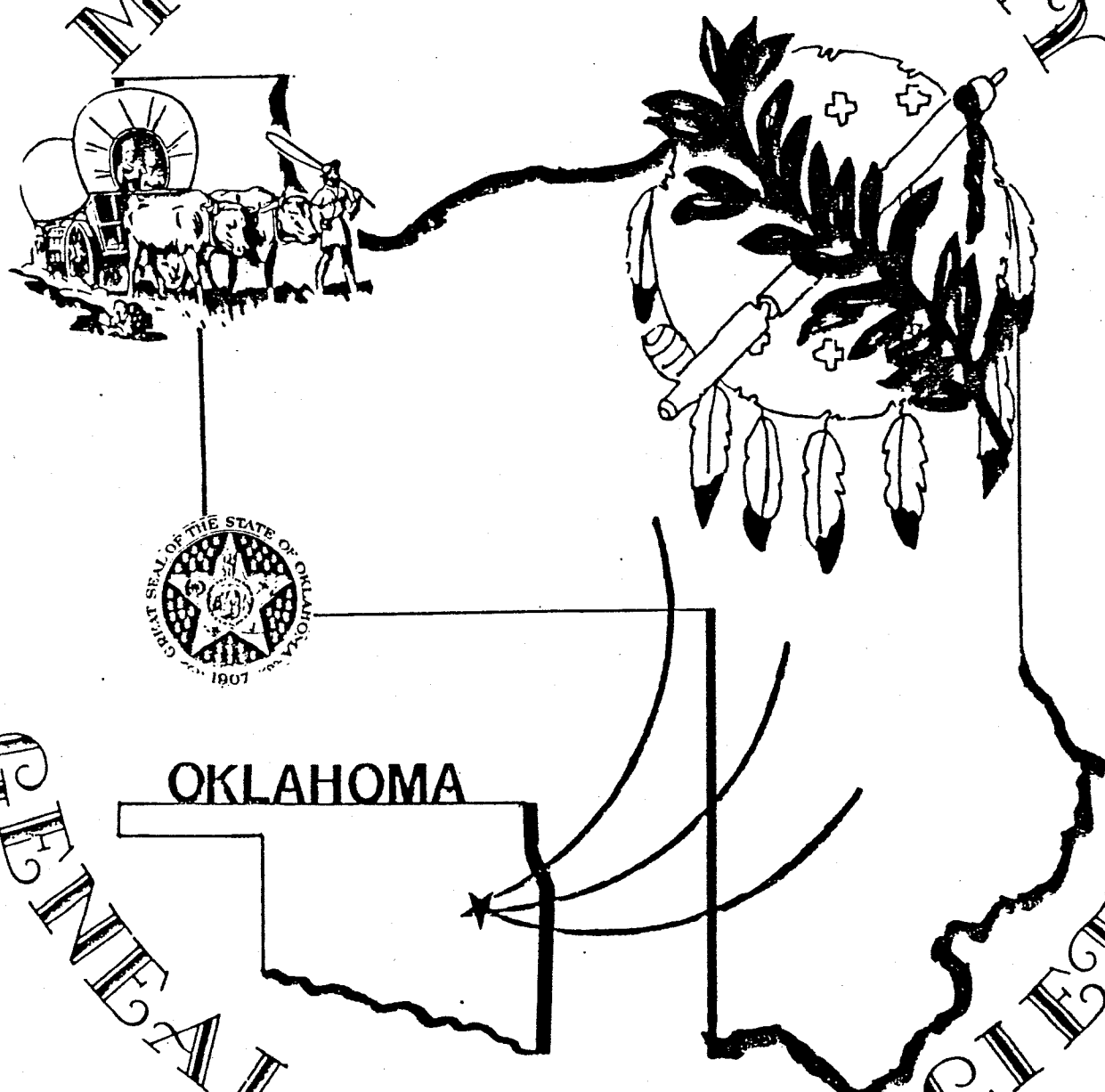


# MUSKOGEE COUNTY



# GENEALOGICAL SOCIETY

# TABLE OF CONTENTS

## Muskogee County Genealogical Society

### Volume 14 No. 1

March 1997

<u>TITLE.....</u>	<u>PAGE</u>
<u>Officers, 1997.....</u>	<u>A</u>
<u>President's Letter.....</u>	<u>1</u>
<u>Taxpayer's of Moore Township, Muskogee County, OK.....</u>	<u>2</u>
<u>William T. Hutchings, Pioneer Lawyer.....</u>	<u>5</u>
<u>Query.....</u>	<u>6</u>
<u>School Census Records, Muskogee Co., Dist. 15, Yahola, Taft - 1912.....</u>	<u>7</u>
<u>Quarterly "Table of Contents" Available.....</u>	<u>12</u>
<u>Muskogee County Schools and Their Districts.....</u>	<u>13</u>
<u>Map - Current School Districts, 1996, Muskogee County.....</u>	<u>14</u>
<u>Muskogee Wants Capital.....</u>	<u>15</u>
<u>Captain John Bunyan Neelly, Civil War Veteran.....</u>	<u>16</u>
<u>United States Court Cases, 1891.....</u>	<u>17</u>
<u>Purely Personal, 1891.....</u>	<u>18</u>
<u>New Members.....</u>	<u>19</u>
<u>McLain, 1909, 1911, 1918.....</u>	<u>20</u>
<u>Table of Group Migrations.....</u>	<u>21</u>
<u>Scottish Prayer.....</u>	<u>22</u>
<u>Julia Byrd, Ancestor Chart.....</u>	<u>23</u>
<u>Ogle Allison, Ancestor Chart by Elizabeth Soeth Nelson.....</u>	<u>24</u>
<u>New Titles in the Grant Foreman Collection.....</u>	<u>25</u>
<u>Membership Survey.....</u>	<u>27</u>
<u>Muskogee County Genealogical Society Publications for Sale.....</u>	<u>29</u>
<u>Application for Membership.....</u>	<u>30</u>

MUSKOGEE COUNTY  
GENEALOGICAL SOCIETY  
801 WEST OKMULGEE  
MUSKOGEE, OKLAHOMA 74401

*Volume 14 No. 1  
March 1997*

**OFFICERS**

Mary Dalton Myers . . . . . President  
Paul Betow . . . . . Vice-President  
Eddie Jeffries . . . . . Secretary  
Mary McLain Downing . . . . . Treasurer  
Gary W. Lester . . . . . Past President  
Ron Riede . . . . . Member-at-Large  
Linda Shackelford Brooks . . . . . Member-at-Large

**MEETINGS:** Society meetings are held on the fourth Thursday of each month (except July and August) at 7:00 p.m. at the Muskogee Public Library, 801 West Okmulgee, Muskogee, Oklahoma.

**BOOK REVIEWS:** Reviews of donated books and materials will receive mention in the Quarterly and at society meetings. Thereafter, they will be housed in the Grant Foreman Room of the Muskogee Public Library for public use.

**NOTICE TO NEW MEMBERS:** Those who join during any month of the year after the membership month of January will receive all Quarterlies that have been published that year.

**M.C.G.S. QUARTERLY:** The Quarterly is published in March, June, September and December of each year. Queries are free to members; \$1.00 for non-members. Back issues are available at \$3.00 each, plus \$1.50 for postage.

*The Muskogee County Genealogical Society and its Board of Directors do not assume responsibility for errors of fact or judgment on the part of contributors.*

Debra Hall Shamblin - Editor

## FROM THE PRESIDENT

It is quite an honor for me to be serving as president of the Muskogee County Genealogical Society. This is a great organization consisting of many helpful people with differing areas of expertise. I wish to thank the 1996 Officers and board members for all of their efforts in making last year a great one for the society. I am looking forward to working with the new officers and all of you to make the 1997 year a similar success.

The OETA 10 part series entitled "Ancestors" has been airing the first part of this year. Our first meeting of the year was at Walter and Deone Penquite's home where we viewed the fourth episode as a group. If you missed this meeting, you missed a great time. Walter and Deone were wonderful hosts, and we had fun eating and visiting after the meeting. Thank you, Walter and Deone!

This is an exciting time for genealogists. Technology is certainly adding new dimensions. Have you checked out the Muskogee county web site on Internet? (I access it by typing <http://www.rootsweb.com/okmuskog/queries.htm>.) There are several queries already. At the February board meeting, it was decided that the Muskogee Public Library would offer researched responses to these for a fee. Queries coming by mail to the Muskogee County Genealogical Society will be handled as usual. Special thanks go to Deone Penquite and Virginia Perry who take care of most of these for the society.

We are rapidly approaching May 17--the date of our Spring Workshop. Meg Hackler from the National Archives in Fort Worth will be the speaker. She will be dealing with Indian records and other early federal records pertinent to this area. An agenda should be available soon. Also, we need help with refreshments, publicity, and set-up. If you can help, let me or Paul Betow know.

The 1997 Federation of Genealogical Societies 17th Annual Conference will be held Sept. 3-6 in Dallas at the Hyatt Regency Hotel at Reunion Tower. It is my hope that many of our society members will be able to attend. The program and registration materials will be available to you at the meetings or you can send for your own to this address.

Federation of Genealogical Societies  
P.O. Box 830220  
Richardson, TX 75083-0220

Several of us are planning to attend. We can possibly ride and room together to cut down on expenses.

This is your organization. In order to meet your needs better, Paul Betow, our vice-president has included a membership survey in this quarterly. If you have not already done so at one of the meetings, please fill it out and get it to us. Also, if you have any ideas, projects, articles, or pictures for the quarterly, send them to us too!

Our general meetings are the fourth Thursday of every month, except July and August, and in November they are held a week prior to Thanksgiving. The board meets the first Monday of every month at 6:00 P.M. Every member is welcome and encouraged to attend. All meetings are held at the Muskogee Public Library unless otherwise announced.

I look forward to seeing you.

Sincerely,  
Mary Dalton Myers



1916  
TAX PAYERS  
of  
MOORE TOWNSHIP

ALDRIDGE, Amos, Boynton  
ALRED, Amora, Haskell  
ANDERSON, Jacob, Yahola  
ANDERSON, J. A., Grocery Co., c, Yahola  
ARDEN, John, Haskell  
ASBURY, James c., Haskell  
ASBURY, Prinnus c., Haskell  
ASBURY, Thomas c., Haskell  
ASHWORTH, H. B., Haskell  
BAKER, D. C., Haskell  
BALES, L., Haskell  
BANKS, Rice c., Haskell  
BARNET, Hager, Haskell  
BARNET, Mennis W., Haskell  
BARNETT M. W., Haskell  
BARNETT, William A., Jr., Haskell  
BEATTY, A. E., Haskell  
BEAVER, Charles c., Haskell  
BERRY, Walter, Haskell  
BINGHAM, Harry, Haskell  
BINGHAM, H. A., Haskell  
BINGHAM, James A., Haskell  
BINGHAM, J. W., Haskell  
BINGHAM, P. P., Haskell  
BINGHAM, W. P., Haskell  
BLANCHARD, Irvin, Haskell  
BOX, C. J., Yahola  
BOX, G. S., Yahola  
BOX, J. E., Yahola  
BOX, M. C., Yahola  
BOX, J. W. & Co., Yahola  
BRADY, O E., Haskell  
BREEDEN, R. D., Yahola  
BREWER, Alice, Haskell  
BREWER, Joseph, Haskell  
BREWER, William, Haskell  
BREWSTER, E. B., Haskell  
BRICKER, L. M., Haskell  
BRICKER, W. J., Haskell  
BROWN, W. A. c., Haskell  
BRYANT, John, Haskell  
BUNCH, W. E., Yahola  
BURTON, Frank, Yahola  
BUTCHER, J. L., Haskell  
CARSON, C. T., Yahola  
CHERRY, W. M., Haskell  
CIELOHE, Charles S., Yahola  
CIELOHE, Chrles S., Jr., Yahola  
CLARK, C. A., Haskell  
CLINK, William, Yahola

COOKSEY, A. C. c., Haskell  
COOPER, J. A., Haskell  
COPLEN, L. B., Haskell  
CORBRAY, Harry, Haskell  
CORBRAY, Roy c., Haskell  
COX, J. V., Haskell  
CRABTREE, S. J., Haskell  
CRAVENS, J. O. Haskell  
CRAVENS, Patrick, Haskell  
CRINER, W. E., Haskell  
CRISWELL, W. J., Haskell  
CULLEN, Frank, Haskell  
CULLOM, John, Yahola  
CULLOM, W. L., Yahola  
DAMME, Fritz H., Haskell  
DAMME, Louis, Haskell  
DANIELS, D., Yahola  
DANIELS, John, Haskell  
DANIELS, W. D., Haskell  
DAVIS, A. C., Haskell  
DAVIS, E. D., Haskell  
DEARMORE, A. J., Haskell  
DICKEY, H. G., Haskell  
DILL, T. J., Haskell  
DILLS, Cyrena, Yahola  
DREW, George c., Haskell  
EASLIN, L., Haskell  
EDWARDS, Henry, Haskell  
EDWARDS, H. H., Haskell  
EDWARDS, J. N., Haskell  
EUBANKS, Charles, Haskell  
FARMER, N. K., Muskogee  
FARMER & Reynolds, Muskogee  
FARMERS Union Gin & Trading Co., Coweta  
FINKE, William, Haskell  
FORD, G. H., Haskell  
FRANKLIN, Reece, Yahola  
FRANKLIN, Richard, Yahola  
GARLAND, John, Haskell  
GARLAND, J. C., Haskell  
GIBBS, G. W., Haskell  
GIBBS, Jesse, Haskell  
GILE, Lyman, Haskell  
GILLAND, Frank, Yahola  
GLOVER, R. V., Yahola  
GOOCH, N. L., Haskell  
GOOCH & Keeney, Haskell  
GRAVES, W. C., Haskell  
GRAYSON, Annie, Haskell  
GRAYSON, Tobe c, Haskell  
GREEN, J. F., Haskell  
GRIFFIN, J. F., Haskell  
GRIFFIN, W. L. c, Yahola  
GRIMMETT, Amanda, Haskell

GRIMMETT, W. S., Haskell  
GRONIGER, C. A., Haskell  
HALL, Bud, Haskell  
HAMILTON, Lon, Haskell  
HANSON, John, Haskell  
HARMON, Edward, Yahola  
HARRISON, John, Haskell  
HARRISON, Richard, Haskell  
HART, Frank, Haskell  
HICKERSON, H., Haskell  
HILL, V. E., Haskell  
HILLARY, Charles, Haskell  
HOLBERT, T. H., Haskell  
HOLLIN, T. H. c., Haskell  
HOLPP, T. W., Haskell  
HOPKINS, R. M., Haskell  
HOWARD, Jackson, Yahola  
HOWARD, J. S. c, Yahola  
HOWARD, Sarah, Haskell  
HUDLESON, L. S., Haskell  
HUNTER, T. H., Yahola  
JACKSON, Joseph c, Haskell  
JACKSON, Mack c, Haskell  
JACKSON, Samuel, Haskell  
JOHNSON, C. D., Haskell  
JOHNSON, James, Yahola  
JOHNSON, Quinton c, Haskell  
JOHNSON Z., Haskell  
KEENEY, G. M., Haskell  
KELLY, Ferdinand, Haskell  
KEPLEY, C. M., Haskell  
KEPLEY, R. L, Haskell  
KEPLEY, R. T., Haskell  
KING, W., Haskell  
KNIGHT, G. W., Haskell  
KRETCHUM, Carl, Haskell  
LADD, E. V., Haskell  
LANDRUM, Tobe c, Yahola  
LATCHAM, T. M., Haskell  
LAUER, Joseph C., Haskell  
LEIB, G. D., Haskell  
LENT, C. W., Haskell  
LEWIS, Benjamin, Haskell  
LEWIS, Polly c, Haskell  
LIGON, Elsie, Mrs., Haskell  
LINDSEY, O. V., Haskell  
LOPP, J. D., Haskell  
LUSTER, W. E., Haskell  
McCULLEN, William, Haskell  
McDANIEL, Jacob, Haskell  
McGILLRAY, Farsey, Yahola  
McGILLRAY, John, Yahola  
McINTOSH, Joseph., Yahola  
McINTOSH, Scott W., Fahola

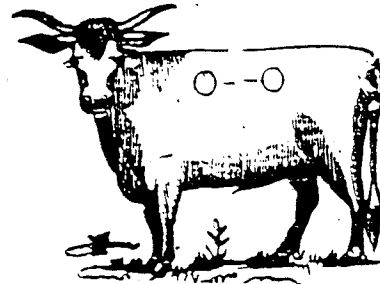
McINTOSH, S. W., Yahola  
McKAY, Edmond, Haskell  
McLEMORE, John, Haskell  
MALICOTT, C. B., Haskell  
MANUEL, Mary, Haskell  
MARTIN, Albert, Haskell  
MARTIN. G. M., Haskell  
MARTIN, T. J. c, Haskell  
MAXWELL, Wallace, Haskell  
MEADERS, A. W., Haskell  
MEADERS, Joseph, Haskell  
MILLER, J. A., Haskell  
MILLER, T. H., Haskell  
MODE, J. I., Haskell  
MOORE, Augusta, R., Haskell  
MOORE, George c, Haskell  
MOORE, H. R., Haskell  
MORAN, J. E., Yahola  
MORGAN, J. W., Yahola  
MORRIS, Thomas, Haskell  
MUNDELL, J. W., Haskell  
NEAL, J. B., Haskell  
NELSON, D. S., Mrs., Haskell  
NERO, Charles, Haskell  
NEW, W. H., Haskell  
NICHOLS, George, Yahola  
OSBORN, A. W., Haskell  
PARMETER, H. M., Haskell  
PAYTON, J. E., Yahola  
PEPPLER, C. H., Haskell  
PETERS, Samuel, Haskell  
PLOG, H. E., Haskell  
PONNCIE, Edmond, Haskell  
PONNCIE, Edward, Haskell  
PONNCIE, Richard, Haskell  
PONNCIE, Sidney, Haskell  
PONNCIE, W. P., Haskell  
POTTER, J. F., Haskell  
PREGLER, John, Haskell  
PRIMM, G. C., Haskell  
PRIMM & Beatty, Haskell  
PRITCHARD, Allen, Haskell  
PRITCHARD, R. E.  
RAMBO, C. S., Haskell  
RAMBO, E., Haskell  
RANDALLS, C. H., Yahola  
REYNOLDS, G. V., Yahola  
REYNOLDS, G. W. c, Yahola  
REYNOLDS, J. C., Yahola  
REYNOLDS, J. V. & Co., Yahola  
RITCHIE, T. S., Haskell  
ROE, George, Haskell  
ROE, Marshall, Haskell  
ROGERS, G. W., Haskell

ROLLINS, J. W., Haskell  
 ROMBACH, John, Haskell  
 ROSENBORROUGH, S. L., Haskell  
 ROUSE, Robert, Haskell  
 ROWE, Freeman, Haskell  
 SANDERS, W. H., Haskell  
 SCHEFFSKY & Son, Haskell  
 SCOFIELD, Beatrice, Haskell  
 SIMMONS, Jake, Haskell  
 SMITH, D. B., Haskell  
 SMITH, F. S., Yahola  
 SMITH, J. W., Haskell  
 SMITH, Stephen, Haskell  
 SPOTTS, W. L. & Bro., Haskell  
 STEWART, John, Haskell  
 STEWART, W. E., Yahola  
 STEWART & Russell, Yahola  
 STOWELL, D., Haskell  
 SWANSON, George W., Haskell  
 TABOR, Henry, Haskell  
 TAYLOR, John, Haskell  
 TROUT, J. J., Haskell  
 TUCKER, Richard, Haskell  
 TUCKER, Walter, Haskell  
 UNDERWOOD, R. O., Yahola  
 VANDERSLICE, Isaac, Haskell  
 VINCENT, Carl, Haskell  
 WADE, Noah, Haskell  
 WALTERS, Eugene, Haskell  
 WARE, Eliza, Haskell  
 WARE, John c, Haskell  
 WATERS, D. W., Haskell  
 WAY, T. J., Haskell  
 WELCH, D., Haskell  
 WELCH, George, Haskell  
 WELSH, L. W., Haskell  
 WESTBROOK, J. B., Haskell  
 WESTBROOK, J. F., Haskell  
 WILLIAMS, Bud, Haskell  
 WILLIAMS, J. H., Haskell  
 WILLIAMS, Samuel, Haskell  
 WILLIAMS, Walker, Jr., Haskell  
 WILLIAMS, W. T., Yahola  
 WILSON, C. T., Haskell  
 WISE, E. W., Haskell  
 WISE, G. W., Haskell  
 WISE, Quilla c, Haskell  
 WOODALL, Alice, Haskell  
 WOODALL, George, Haskell  
 WRIGHT, J. B., Haskell  
 YOCHAM, A. L., Yahola  
 YOCHAM, W. T., Haskell  
 YOUNG, M. G., Haskell  
 YOUNGBLOOD, W. R., Yahola

TAKEN FROM THE PHOENIX MUSKOGEE CITY AND COUNTY  
 DIRECTORY - 1916

C = COLORED

R. A. EVANS,  
 P. O. Muskogee,  
 Ranch at Brushy Mountain, 8 miles  
 S. E. of Muskogee.



None sold except for beef.  
 Horses branded H on left shoulder.



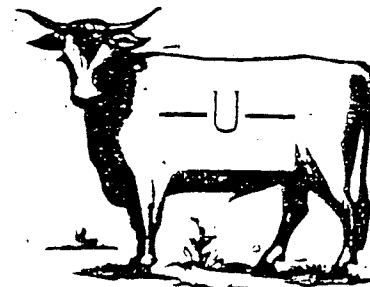
S. T. DAVIS,  
 P. O. Briartown, I. T.  
 Ranch 10 miles north of  
 Briartown.  
 Various other marks  
 and brands.



E. E. WELDON,  
 P. O. Gibson Station, I. T.  
 Cattle range five  
 miles west of Gibson  
 station. Horses have  
 same brand.

Some branded 3

A. P. McKellop,  
 Post Office, - Muskogee, I. T.



Brand —U— Earmark, under-  
 slope each ear.  
 Range two miles east of Muskogee.

## PIONEER LAWYER - WILLIAM T. HUTCHINGS



William T. Hutchings (Major) came to Muskogee with the establishment of the old territorial court here in 1889. He was one of the charter members of the Muskogee Bar Association which was organized in that year. For several years he was president of the Association and was always considered one of the leading members.

Major Hutchings was born in Chatham, Pittsylvania County, Virginia. He attended Virginia Military Institute and Richmond College and was a graduate of the Yale Law School. From Yale he went to Washington as document clerk in the House of Representatives.

From Washington he went to Danville, Virginia and practiced law for a short time. It was there that he married Mary E. Key in 1885. Miss Key was the daughter of Dr. John P. Key, a prominent physician of Brenham, Texas.

He came to Ft. Smith, Arkansas and practiced law until the establishment of the federal court there.

He was a member of several law firms here in Muskogee, including Sandells; Warner and Hutchings; Hill and Hutchings; Hutchings and English; Hutchings and West; Murphy and German and Hutchings and German.



In his practice he has appeared in many counties of the land, including that of the Supreme Court of the United States. He was attorney for the Cherokee Nation in the final settlement of their affairs.

Major Hutchings was a member of the first city council after the organization of Muskogee and was a member of the board of education for several years and was city attorney.

He earned his military title through appointment to the staff of Governor Haskell. he was commander of a company at the Virginia Military College and later in the Virginia National Guard.

Major Hutchings was very fond of fine horses and harness races. He owned several champion trotting horses and race horses.

He was a member of the Masonic Lodge, the Elks and the Modern Woodmen. He was the third son of Dr. J.M. Hutchings.

Major Hutchings died February 3, 1918. He and his wife who died March 24, 1920, are buried in Greenhill Cemetery. A daughter, Lucy died in 1890 and is buried there also. He had one other daughter, Mrs. Nellie (Charles A.) Looney.

---

The preceding material was extracted from "End of the Century Edition of the Muskogee Phoenix" and the Muskogee Daily Phoenix, February 5, 1918

+++++

### QUERY

Seek info on JOEL GARNAND d. Haskell 1925, wife, SARAH HERN, daughter, MAGGIE GARNAND m. WILLIAM SARTAIN, d. after 1925, OK or FL.  
LENORA SARTAIN b. 1894, OK, d ?. m. BARRY HAMILTON, OK., daughter,  
HELEN HAMILTON b. 1917, m.? d.?  
BESS SARTAIN b. OK, m.?, d. ?.  
LESTER GARNAND b. 1872, d. 1934, bur. Haskell. d. where? his kids?  
DAISY GARNAND m. GOODMAN d. 1982, OK  
GEORGE HAROLD GARNAND (Jimbo) d. 1975, OK  
LESTER(Bud) GARNAND d. 1979 OK  
LILLIAN GARAND m. FISHER, daughter.  
WILL HERN d. 1929. sons 1. WILL HERN, 2. VANCIL d. WWI?  
SUSAN SCOTT HERN, wife of Will Hern, d. aft 1882, where?  
LLOYD ALLISON d. abt 1913-1916, buried in Bixby, d. where? when?  
Families traced back to 1600's and Revolutionary War. Surname variations.  
Seek any descendent or information of above. Ancestor Chart, this issue.

---

Elizabeth Soeth Nelson, P.O. Box 664, Hailey, ID 83333

**1912 MUSKOGEE COUNTY SCHOOL CENSUS**  
**DISTRICT 15, YAHOLA**  
 Colored

<b>PARENT</b>	<b>CHILDREN</b>	<b>SEX</b>	<b>BIRTH</b>	<b>AGE</b>
Helen Dykes	Dykes, Burlan	M	Feb 10, 1892	12
	Dykes, Charley	M	Feb 15, 1897	14
	Dykes, Bryant	M	Sep 25, 1899	13
	Dykes, Harrison	M	Nov 25, 1900	11
	Dykes, Sylvanus	F	Jul 15, 1903	8
B.E. Bradley	Bradley, Pearla	F.	Sep 20, 1898	13
	Bradley, Fred L.	M	April 21, 1896	15
	Bradley, Hugh W.	M.	Apr 29, 1901	10
	Bradley, Fran	M	Aug 26, 1891	20
Lizzie Severs Phaser McGoble	Bown, Dewey	M	Mar 25, 1895	16
	Smith, Sallie	F	Mar 25, 1895	16
M.C. Box	Box, Sells	M	Feb 26, 1902	9
	Box, Melton	M	Jan 3, 1904	8
	Box, Fay	F	May 6, 1905	6
J.E. Box	Box, May	F	Dec 6, 1905	—
I.H. Crown	Crown, Mary	F	Sep 5, 1891	20
	Crown, Myrtle	F	Jul 22, 1897	14
	Crown, George M.	M	Jul 22, 1899	12
Mrs. J.C. Reynolds	Reynolds, Cecil	M	Feb 20, 1901	10
	Reynolds, GA__	F	Feb 20, 1903	—
G.F. Farmer	Farmer, Alvin	M	Jan __, 1901	10
	Farmer, Myrtle	F	Mar 1, 1904	7
W.N. Bishop	Bishop, Nora	F	Apr 8, 1898	14
	Bishop, Charley Nathan	M	Aug 8, 1899	12
	Bishop, Virgie May	F	Aug 2, 1901	10
	Bishop, Birney E.	F.	Sep 26, 1903	8
	Bishop, Wm. Warner	M	Oct 8, 1905	6

PARENT	CHILDREN	SEX	BIRTH	AGE
Cordelia Strickland	Strickland, James	M	May 19, 1896	15
	Strickland, Hollie	F	Dec 22, 1898	13
	Strickland, Cordie	M	Nov 19, 1899	12
C.T. Carson	Carson, Clifford	M	Oct 29, 1898	14
	Carson, Louie	M	Oct 11, 1901	10
Mrs. J.C. Box	Box, Thomas Herman	M	May 6, 1892	19
	Box, Jefferson Wake	M	Apr 6, 1894	17
	Box, Birdie A.	F	Aug 27, 1900	11
John Arden	Arden, Jack	M	_____	14
	Arden, Annie	F	_____	10
J.E. France	France, James	M	Nov 8, 1896	15
	France, Tommie	M	Oct 26, 1900	11
	France, Homer	M	Apr 5, 1902	8

S.W. McIntosh - Clerk, School District # 15  
 Colored Males - 25  
 Colored Females - 15  
 Total 40

E.E. Tabor, Notary

**DISTRICT 16, TAFT & Yahola**

Jack Wade	Wade, Birdie	F	Aug __ 1897	14
	Wade, Sherman	M	Sep __ 1898	13
Perlie Kelley	Kelley, Gurtie	F	Feb 11, 1901	10
J.H. Carr	Carr, Johnnie	M	Jul __ 1895	17
	Carr, Hays	M	May 4, 1897	14
	May Ellen	F	Jan 20, 1899	12
Annie Perkins	Wilson, Lizie	F	Mar 27, 1893	18
	Wilson, Nettie	F	Jul __, 1894	16
	Show, Yizzie	F	Oct 14, 1898	13
	Show, David	M	Jan 13, 1902	10
	Bishop, Joe	M	Mar 10, 1902	9

<b>PARENT</b>	<b>CHILDREN</b>	<b>SEX</b>	<b>BIRTH</b>	<b>AGE</b>
Mariah Bevers	Brotten, Naomia	F	Sep 15, 1899	12
Sanzo Scott	Sanzo, Salle	—	Nov 15, 1901	10
Annie Bailey	Bailey, George	M	Jul 20, 1905	6
J.R. Rictcherson	Ritcherson, Birdie	F	Mar 25, 1893	18
	Ritcherson, Anjeller	F	Apr 15, 1895	16
Lizzie Sanders	Sanders, Willie	M	Mar 15, 1894	17
Millie Doyle	Doyle, Willie	M	Jan 9, 1898	14
	Doyle, Susie	F	June 27, 1900	11
	Doyle, Ned	M	May 4, 1905	6
Lola Franklin	Gorden, Nancy	F	Feb 11, 1900	11
Emorie Clough	Clough, Gussie	F	Sep 4, 1891	20
James Berrie	Berrie, Saurah	F	Dec 4, 1894	17
	Berrie, Sudie	F	Nov 6, 1896	15
M.J. Hillyard	Hillyard, Emmerbell	F	Apr 22, 1904	8
	Hillyard, Addie	F	Nov 7, 1906	6
Harner Thomas	Thomas, Burdie	F	Aug 17, 1898	13
	Thomas, Purlie	F	Aug 7, 1900	11
	Thomas, Harner	M	Oct 5, 1902	9
R.B. Hamilton	Robert Mays	M	Aug 23, 1900	11
Martha Crofford	Crofford, Mat	M	May 28, 1894	17
	Crofford, Johnnie	M	Aug 18, 189-	12
	Crofford, Tom	M	Mar 14, 1902	9
	Crofford, Andrew	M	Sep 27, 1904	7
J.W. Curl	Curl, Joeefler	F	Feb 28, 189_	13
	Curl, Roxie	F	Oct 3, 1899	12
	Curl, Sidy	F	Oct 2, 1901	10
	Curl, Paul	M	Sep 22, 1903	8

<u>PARENT</u>	<u>CHILDREN</u>	<u>SEX</u>	<u>BIRTH</u>	<u>AGE</u>
B.H. Richard	Richard, Redfield	M	Dec 19, 1891	20
	Richard, Parthenie	F	Nov 1, 1893	18
	Richard, Mary E.	F.	Jul 18, 1895	16
	Richard, H.B.	M	Jul 14, 1898	14
	Richard, Selby	M	Jan 20, 1905	6
Houston Battle	Battle, Houston	M	Jan (9), 1895	17
	Battle, Aquilla	F	Jan 18, 1898	13
	Battle, Melvinie	F	Jan 22, 1901	10
	Battle, Bessie	F	Feb 3, 1905	6
John Whitley	Whitley, Octavia	F	Mar 7, 1898	13
J.J. Ragsdale	Hodge, Sallie	F	Nov 5, 1898	14
	Nivins, Isabelle	F	Jan 27, 1902	9
	Nivins, Julie	F	Feb 27, 1904	7
	Nivins, Dollie	F	May 5, 1905	6
J.R. Ragsdale	Ragsdale, Allie	F	SEp 11, ___	13
	Ragsdale, Salla	F	Sep 11, ___	13
	Ragsdale, Leaner	F	Sep 9, 1901	10
George Curl	Curl, Bobbie Sue	F	Mar 8, 1898	13
	Curl, Guy	M	Aug 12, 1900	11
	Curl, Henry W.	M	Jul 25, 1902	9
	Curl, Samie D.	F	Sep 16, 1903	8
Quinton Johnson	Johnson, Febie	F	Mar 9, 18__	20
Senia Taylor	Taylor, Mariah	F	Jan 24, 1896	15
	Taylor, Etter	F	Feb 14, 1898	13
	Taylor, Tom	M	Mar 31, 1902	9
	Taylor, Annie	F	Jul 25, 1904	7
Oscar Smith	Engerhort, Basie	F	Sep 5, 1901	10
Jiles, J.W.	Jiles, May	F	May 27, 1899	21
	Jiles, Annie V.	F	Aug 10, 1895	17

PARENT	CHILDREN	SEX	BIRTH	AGE
Wesley Allen	Allen, Stephen	M	Jul 13, 1891	20
	Allen, P.J.F.	F	Nov 23, 1892	19
	Allen, Ellen	F	Nov 18, 1894	17
	Allen, M.T.	M	Sep 16, 1899	14
	Allen, J.T.S.	M	Dec 23, 1900	11
	Allen, Oscar	M	Jan 10, 1904	8
Gurtie Doyle	Doyle, Katie	F	May 3, 1904	7
Ned Jones	Jones, Eve F.	F	Nov 1, 1901	11
	Jones, Orda F.	F	Nov 20, 1902	10
	Garrett, Eugene	M	Mar 1893	19
Rice Banks	Banks, Mary Bell	F	May 14, 1892	20
	Banks, Marshall	M	Oct 6, 1893	19
	Banks, Lawrence	M	Nov 25, 1896	16
	Banks, Hattie	F	Oct 22, 1900	12
	Banks, Floyd	M	May 16, 1903	9
	Banks, Earnest	M	May 3, 1906	6
Walker Williams	Williams, Marsella	F	Jul 29, 1895	17
	Williams, Jessie	M	Feb 26, 1892	20
	Williams, Ulyeses	M	Jan 18, 1896	16
	Williams, Julius	F	May 11, 1903	9
	Williams, Velma	F	Apr 7, 190	8
Dick Lee	Lee, David	M	Oct 13, 1892	20
	Lee, Ross	M	Jun 17, 1894	18
	Lee, Amos	M	Feb 17, 1896	15
	Lee, Mollie	F	Oct 2, 1899	12
Thomas Leeks	Leeks, Alton	M	Oct 10, 1898	13
	Leeks, Doshia	F	Nov 22, 1899	12
	Leeks, Grant	M	Aug 3, 1901	10
	Leeks, Queen Birdie	F	Nov 28, 1902	9
	Leeks, Thomas Aaron	M	Mar 21, 1901	8
Henry Gillard	Gillard, Maggie	F	Nov __, 1994	18
	Gillard, Ada	F	Oct __, 1896	16
	Gillard, Mary Louise	F	Jan __, 1901	11
	Gillard, Sallie	F	Jan __, 1902	10
	Gillard, Lilly	F	Sep __, 1904	8

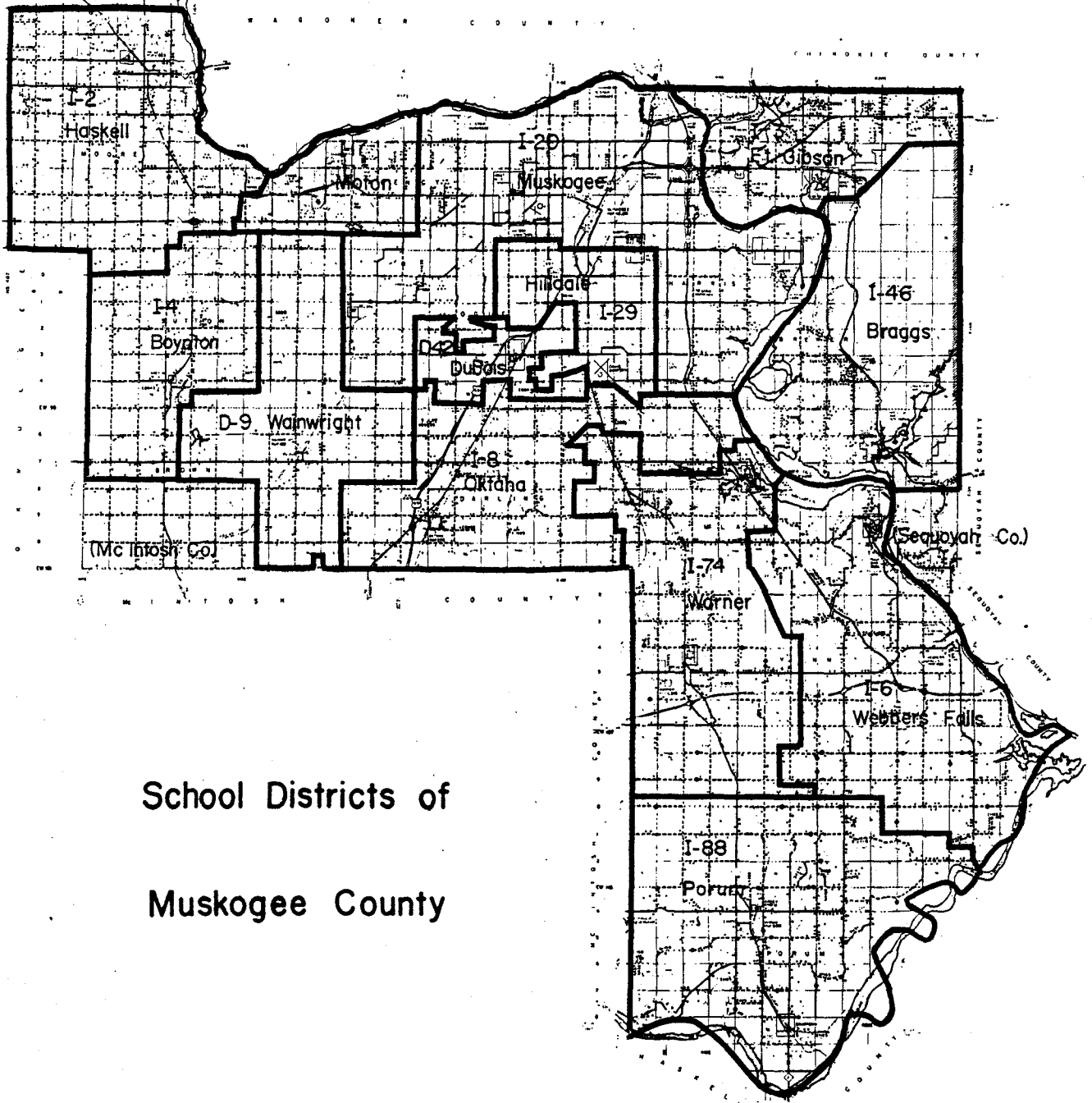


**MUSKOGEE COUNTY SCHOOLS & THEIR DISTRICTS (1912)**

<u>School</u>	<u>Dist. No.</u>	<u>School</u>	<u>Dist. No.</u>
Agency	7	McClain	66
Arcade	33	Monday' Chapel	53
Bacone College	5	Moton	17
Banks	12	Mountain Grove	71
Battle Creek	15	Mountain View	31
Black Jack	82	Mountain View	86
Briartown	91	Neff	79
Brushy Mountain	44	Nero	1
Buckhorn	67	New Hope	64
Canaan	5	Nowata	91
Cane Creek	35	Oak Grove	18
Cedar Creek	69	Oak Grove	86
Chimney Mountain	41	Pecan Creek	10
Coal Creek	15	Perkins	1
Cole	35	Pleasant Valley	61
Conley	84	Pope's Chapel	75
Davis	29	Prairie View	43
Eugene Field	40	Riverside	21
Fairview	30	Ross	87
Frozen Rock	21	Salem	55
Gap Prairie	89	Sallie Brown	28
Georgetown	22	Sander's Chapel	18
Glendale	23	Sequoyah	52
Hall	41	Shoemake	76
Harris	5	Sims	80
Hickory Ridge	83	Stebbins	32
Hilldale	29	St. Peters	31
Hopewell	27	Sugar Creek	5
Howard Chapel	27	Sugar Creek	16
Hurd	51	Sunny Slope	65S
Hyde Park	19	Turpin	90
Jersulem	7	Vann	85
Keefeton	65	Victory	89
Liberty	49	White Star	17
Liberty	53	Wickett	78
Lonestar	54	Woodall	81
Lonestar	73	Wybark	4
Manual	2	Younger Bend	90
McIntosh	78	Zora	50
McSwain	32		



CURRENT DISTRICTS



School Districts of  
Muskogee County



## MUSKOGEE WANTS STATE CAPITAL

Will Make a Bid for Seat of government of The New State at Proper Time

---

51,000,000 Bonus To Be Raised

---

And offered to the People in Shape of a Magnificent Capital Building Constructed of  
Tishomingo Granite

The undersigned citizens of Muskogee, Indian Territory, are in charge of plans to secure the capital of the new state, and a part of the plan is to offer a fine capitol building free, under such reasonable concessions as will certainly meet with the unanimous approval throughout the new state. This building is to be built of Tishomingo granite and will cost \$1,000,000. Muskogee, now the leading city of the new state, is amply able to back this contract.

C.W. Turner  
C.W. Raymond

A.Z. English  
P.B. Hopkins

J.W. Zevely  
C.N. Haskell

The above is the result of a capital conference recently held in Muskogee and speaks for itself. At the proper time a proposition will be made to secure the location of the state capital in this city, and in the interval a systematic plan of campaign will be carried out. The building will be a handsome structure three stories and basement, surmounted by a magnificent dome and will be fitted with all modern conveniences. The exterior walls will be of Tishomingo granite, the roof of copper and the interior finished in marble. The building will be fire proof and is designed to accommodate all necessary state officers.

The Muskogee Record \_\_\_\_\_ Muskogee, Indian Territory, June 30, 1904

## MUSKOGEEAN WHO FOUGHT AT SHILOH BURIED HERE

Extracted from the Muskogee Daily Phoenix Mar 10, 1938

Captain John Bunyan Neelly, 92 year old Civil War Veteran who as a young, slightly built Arkansas farm boy persuaded the Confederate recruiting officer that he was "man enough to fight those Yankees," was buried Wednesday afternoon in Greenhill Cemetery. He had been ill only a few days.

Neelly rarely spoke of his war days according to William Jefferson, a fireman at station No. 3 on West Okmulgee avenue and a nephew of the old soldier. Modest and retiring, the former Confederate cavalry officer seldom offered for strangers his story of America's fratricidal crisis.

### "We Had Grant Whipped"

Captain Neelly often, during a conversation, would become engrossed in the subject and drop a few choice morsels of his war experiences. One of these concerned the battle of Shiloh in Tennessee, when he was serving with an Arkansas cavalry unit. "We had Grant whipped," he would say, "but that fellow came back the next morning, while we were still asleep, and routed us off the ground we had gained the day before."

Neelly served his entire soldiering career under the brilliant Creole general from New Orleans, Beauregard, who was considered by the veteran to be a better battle strategist than Lee, the commander of the southern forces.

### Soldier Expired on Flag

In one battle Neelly recalled an incident which impressed him so much that he told of it during his sickness here in the hospital prior to his death Tuesday. A young cavalry officer was severely wounded during the height of the battle, and knew that he was dying, Neelly recalled. Leaning painfully over the side of his horse, he begged his comrades to lay him on the "stars and bars," the Confederate flag, so that he could breathe his last on the colors.

After the war, Neelly, elevated to the rank of captain, helped to construct the first telegraph line across the prairies and mountains of the west to San Francisco. There in that thriving young city, he found a job of driving a "horse trolley" through the "lusty city" streets. And He often laughed at the fact that he received 60 dollars a month for that job. Big wages in those days, he would say.

From San Francisco he went to Los Angeles, then a little city of 6,000 souls. He wasn't impressed by the southern California metropolis. When he was told lately that Lost Angeles now contained some three million inhabitants, he could hardly believe it.

Neelly came to Muskogee 40 years ago, after his wandering over the country, and established himself with the Patterson Merchantile Co. He was one of the last Confederate veterans in this county, Henderson stated. Neeley was born in Tennessee on July 1, 1846, but lived in Circa, Ark. up to the time of his enlistment in the Southern army.

Pallbearers at the funeral were Harry A. Fits, Rector Fitts, William Henderson, Clint J. Askew, Ralph A. Lain and Raymond A. Daniel.

UNITED STATES COURT

Muskogee Daily Phoenix, Dec. 10, 1891

The following cases have been adjudicated by the Honorable Court:

John Geffry vs. Mathias J. Woodruff, Verdict in favor of plaintiff in the sum of \$400.

George W. Green vs. M.K. & T. Ry., decided in favor of defendant.

C.H. Hawkins vs. S.K. Condray, verdict for plaintiff

George Bethel vs. Western Union Telegraph Company, favor of plaintiff for \$100.

Cambell Russell vs. T.B. Terry, in favor of defendant.

Colbert E. McCauley vs. James M. Hazlewood, verdict of \$20 in favor of plaintiff.

The cases of Walter A. Wood Mowing Machine Co., J.S. Merrill Drug Company and Wear Boogher Dry Goods Company vs. Lindsey & Fry, were consolidated, heard and decided in favor of defendant, verdict \$2,838.

One of the most interesting and ludicrous cases tried this term was that of Mrs. McLoffland vs. Dr. Bird, a dentist. In the fall of 1884 plaintiff contracted with the defendant to remove all her natural teeth and substitute artificial ones. Plaintiff claims that the doctor did not use professional skill, and as a consequence she suffered unnecessary pain, also that her digestive organs were effected and her mind weakened. Plaintiff asks for \$800 remuneration, but the jury found the issues in favor of defendant.

The large amount of Chancery work has necessitated the appointment of three special masters: Koogler, Denison and Wisdom, three Jurists in whose hands justice will be judicially and equitably administered.

Visiting legal lights who have addressed His Honor are: Judge Rogers, Ft. Smith, Arkansas; Judge Glass, Kansas; McCloud, Denison, Texas; Lee Sandels, Ft. Smith, Arkansas; Col Hubbard, Alton, Indian Territory; Col. Cravens, Ft. Smith, Arkansas; Johnson (attorney for the Missouri Pacific) Little Rock, Arkansas; Smith of Vinita; George E. Dodge of Ft. Smith, was admitted to the bar Monday in order to transact some business before the court.

By referring to the jailer's record we observe that the following named persons have been committed since our last report: Andy Crittenden, disturbing peace; Jack Wallace, disturbing religious worship; Edwards Wood, carrying concealed weapon; Walter Elliott, assault and battery; Tug Wilson, larceny; Wm. Dixon, Sabbath breaking; James Bruce, carrying concealed weapon; Wm. Flynn, introducing; John Major, introducing; John T. Scott, resisting officer; Richard Drake, disturbing peace; J. M. Stanley, receiving money under false pretense; Ed Powell, gaming; S.J. Miller, larceny; James Johnson, introducing; Jno Foster, gaming; John Forrest, malicious mischief.

\*\*\*\*\*

### PURELY PERSONAL

J.S. Scott of Ft. Gibson was noticed in the city Tuesday.

H.M. Harjo and wife, of Eufaula, were registered at Hotel Adams yesterday.

Mrs. Arthur Berry returned Thursday last from an extended visit with relatives at Parsons, Kansas.

Miss Dora Cobb, accompanied by Miss Mamie Elliott of Adair, returned to the city Wednesday.

Col. H. Hubbard and Mr. F.M. Crowell, of Afton, I.T. were noticed in the city the first of the week.

Rev. J. F. Thompson, superintendent of the Cherokee Orphan Asylum was in the city yesterday.

W.B. Glasse, Esq., a prominent attorney of Oswego, Kan., was registered at Hotel Adams Monday.

Will Owen came over from Tahlequah Saturday. He expects to spend the holidays at his old home in Virginia.

Chas. M. Ball, cashier of Condon's bank of Coffeyville Kan., was attending U.S. Court as a witness Tuesday.

Geo. E. Dodge of Little Rock, Ark., general attorney for the Missouri Pacific, was in the city the first of the week.

The Misses Shackelfords will leave the latter part of the week for Evansville, Ind., where they will spend the holidays.

Mrs. J.A. Patterson returned Tuesday from Alabama. he was accompanied to this city by two nieces and a nephew.

Miss Bronson, teacher at the Presbyterian Mission school, returned the latter part of last week from an extened visit to Tahlequah.

J.W. Baldwin, formerly business manager of the "Brothers in Red" in this city, has purchased the Van Buren "Graphic" and will move to Van Buren and conduct the paper.

Marshall Bragdon leaves today for Lehigh to take a position in the Company store at that place, in which institution Mr. Bragdon is a stockholder. We wish him luck in his new post.

Miss Winnie Needles, who has been visiting her sister, Mrs. F.S. Genung, for several weeks, will leave Sunday for her home at Nashville, Ill. She will be accompanied home by Mrs. Genung, who will remain until after the holidays.

Walter Jackson, the young man who has been confirmed as Superintendent of Public Schools for the Cherokee Nation, is a son of Capt. Wm. Jackson of Gibson, and is favorably known here in Muskogee. Walter is possessed of excellent qualities and is well fitted to satisfactorily fill the position with which he has been honored.

Henry Chamber, second chief of the Cherokee Nation, died after a brief illness this morning at 10 o'clock at Tahlequah. Mr. Chambers was one of the leading and influential men of the Cherokee Nation and had been for years a political leader amongst his people. he had held many offices of trust and honor. Under Bushyhead's administration he was the national treasurer and was elected last fall on the Downing ticket as second chief. His loss will be severely felt by the Nation.

!!!!!!!!!!!!!!!!!!!!!!!!!!!!

#### **NEW MEMBERS**

**JULIA BYRD**

P.o. Box 28, Porum, OK 744455

**BARBARA DYE**

1492 Bayou Bend Ln., Ft. Gibson, Ok 74434  
Researching: GILSTRAP, LOVETT

**ELIZABETH SOETH NELSON**

P.O. Box 664, Hailey, ID 83333  
Researching: GARNAND, HERN, SARTAIN,  
HAMILTON, FISHER.

## McLAIN - 1909

Oklahoma State Gazetteer & Business Directory 1909-1910  
R.L. Polk & Co.

McLain. Population 150. In McLain township, Muskogee County, 18 miles southeast of Muskogee, the county seat, and 5 from Keefeton, the nearest shipping point. Has Baptist, Christian and Methodist churches and a public school. Mail stage daily to Keefeton, fare 25 cents. C.H. Milligan, postmaster.

Brownud E., exp. agt.	Campbell, G.W., blacksmith
Coon, James M., physician	HARROD, A.S., physician
Jackson, J.H., general store	Johnson, Rev. L.V. (Methodist)
Johnson, Rev. S.M. (Methodist)	Kaiser, J.A., constable
Milligan, C.H. General Store, Notary Public & Real Estate	Neal, S.H. justice of peace
Rains, C.L. general store	Sallee, Rev., J.W. (Methodist)

## McLAIN - 1911

Rains, C.L., postmaster	Campbell, Z.N., constable
Coon, James M., physician	Jackson, J.H., general store
Johnson, Rev. L.V. (Methodist)	Johnson, Rev. S.M. (Methodist)
Kilpatrick, G.W., general store	Martin, R.L., justice of peace
Rains, C.L., general store	Sallee, Rev., J.W. (Methodist)

## McLAIN - 1918

Oklahoma State Gazetteer and Business Directory  
R. L. Polk & Co.

McLain. Population 60. A discontinued postoffice in McLain township, Muskogee county, 18 miles southeast of Muskogee, the judicial seat, and 5 1/2 miles from Keefeton, the nearest shipping point. Average price of improved farm land in vicinity of \$30, 00 per acre. Rural delivery from Keefeton.

Collins, A.a., General store	Davis, W.Z., General store
Godfrey, C.A., grocer	

## TABLE OF GROUP IMMIGRATIONS

YEAR	DESTINATION	ORIGIN	FAITH
1607	Jamestown, VA	England	Church of England
1608	Jamestown, VA	England	Church of England
1609	Jamestown, VA	England	Church of England
1609	Bergen, NJ	Holland	
1609	Bergen, NJ	Norway	
1612	Delaware Valley, NJ	Sweden	
1620	Plymouth Colony, MA	England & Holland	Puritans
1621	Fort Orange (Albany, NY		
1623	Fort Orange (Albany, NY	Flanders & Holland	Protestants
1626	New Amsterdam (N Y City), NY		Holland
1630	Boston, MA	England	Puritans
1633	Schoharie & Mohawk V., NY	Sweden	
1633	Ft. Good Hope (Hartford), CT		
1634	St. Mary's, MD	England	20 Catholics 200 Protestants
1636	Connecticut & Rhode Island	Massachusetts	Baptists
1638	Ft. Christins (Wilmington), DE	Sweden	
1638	New Hampshire	Massachusetts	Puritans
1643	Uplands (Chester), PA	Sweden	
1644 - 1649	Anne Arundel Co., MA	Virginia	Puritans
1653	Chowan River, NC	Virginia	
1664	Cape Fear River, NJ.	Barbados Islands	
1664	Eastern part of N.J.	Ireland	Presbyterians
1664	Western part of N.J.		
1664	Newark, N.J.	Connecticut	Puritans
1664	Delaware River, N.J.	England	Quakers
1670	Albemarle Point, SC	England & Barbados Island	
1671	Charleston, SC	New York & Holland	
1677	Germantown, PA	Rhineland, Germany	
1678	South Carolina	England	Quakers
1680	Charleston, SC		
1681	Philadelphia, PA	England	Quakers
1682	Philadelphia, PA	England	
1682 - 1684	Delaware River in NJ	England	Quakers
1683	Charleston, SC	Somersetshire England	Baptists
1683	Eastern, NJ	Scotland	Presbyterians
1683	Ashley River, SC	Ulster, Ireland	Presbyterians
1683	Port Royal, SC	Scotland	Presbyterians
1685	Port Royal, SC	France	Huguenots
1690	Bath, on Pamlico River, NC	Virginia	Huguenots
1690	West of Philadelphia, PA	Wales	Quakers
1699 - 1763	Louisiana Territory	France & Canada	Catholics
1700	West of Philadelphia, PA	Germany	Mennonites
1700	James River, VA	France	Huguenots
1702	Alabama	France	Huguenots
1704	Pamlico River, NC	France	Huguenots
1706	Sullivan Co., NY	Palatinate To London	Protestants
1709	Lancaster Co., PA	Switz. to Alsace to London to Pennsylvania	Mennonites
1710	Columbia Co., NY	Palatinate to London	Protestants
1710	Nuese River, NC	Palatinate	Protestants
1710	Nuese River, NC	Bern Switzerland	Mennonites



1720	Charleston, SC	Scotland	Presbyterians
1723	Lancaster Co., PA	New York	Protestants
1726	Shenandoah Valley, VA	Pennsylvania	Protestants
1729	New Orleans	Natches, MS	Catholics
1730	Baltimore Co., MD	Pennsylvania	
1731	Southeastern, PA	Germany	Schwenkenfelders
1732	Beaufort Co., SC	Wurtemberg, Germany	Protestants
1733	Savannah, GA	England	
1734	Ebenezer, Effingham Co., GA	Salzburg, Austria	Lutherans
1736	Ebenezer, Effingham Co., GA	Germany	Moravians
1736	Richmond Co., GA	Scotland	Presbyterians
1736	Great Peedee River, SC	Pennsylvania	Baptists
1739 - 1740	Wachovia (Winston-Salem), NC		Pennsylvania
	Moravians		
1739	Foraythe & Gullford Co., NC	Pennsylvania	
1740	Frederick Co., VA	Pennsylvania	Presbyterians
1744	Brooke Co., (W.), VA	Pennsylvania	Presbyterians
1745	Yadkin River, NC	Germany	
1750	Wilmington, NC	Ulster, Ireland	Presbyterians
1751	Georgia	Dorchester Co., PA	
1755	New Orleans	Nova Scotia	Catholics
1755	Baltimore Co., MD	Nova Scotia	Catholics
1755	Baltimore Co., MD	Ireland	Catholics
1755	Lewisburg, (W.), VA	Pennsylvania	Presbyterians
1761	South Carolina	Ulster, Ireland	Presbyterians
1767 - 69	Wrightsboro, NC	Pennsylvania	Quakers
1769	Iredell Co., NC	Pennsylvania	Presbyterians
1769	Watauga River, TN	Southwestern VA	
1770	Brothers Valley, Cumberland Co., PA (now Somerset Co.)	Germany	Dunkards
1774	Wilmington, NC	Caithness and Sutherland County, Scotland	Presbyterians
1775	Southeast, NC	Scotland	Presbyterians
1775	Louisiana	New England	Loyalists
1775	Bethlehem, PA	Effingham Co., GA	Moravians
1790	Wilmington, NC		
1793 - 1795	Baltimore Co., MD	San Domingo	
1803 - 1860	New York	Ireland	Catholics
1809	Alabama	Tennessee	Presbyterians
1811	Orange Co., IN	Pennsylvania	Quakers
1817	Baltimore Co., MD	Ireland	Catholics
1825	New York	Norway	Lutherans
1830 - 1850	Rockingham, Chatham and Guiford, NC	Virginia & Pennsylvania	Quakers

\*\*\*\*\*

Scotch-Irish Traits--The Scotch Irishman was described by some writers as "clannish, contentious, and hard to get along with." He was usually 'set in his ways,' illustrated by the prayer attributed to him,

"LORD, GRANT THAT I MAY ALWAYS BE RIGHT,  
FOR THOU KNOWEST THAT I AM HARD TO TURN"

His thrift was proverbial, and it was said of him, The Scotch-Irishman is one who keeps the commandments of God, and every other good thing he can get his hands on.

From "The Darnall, Darnell Family" Vol. 2, Avlyn D. Conley

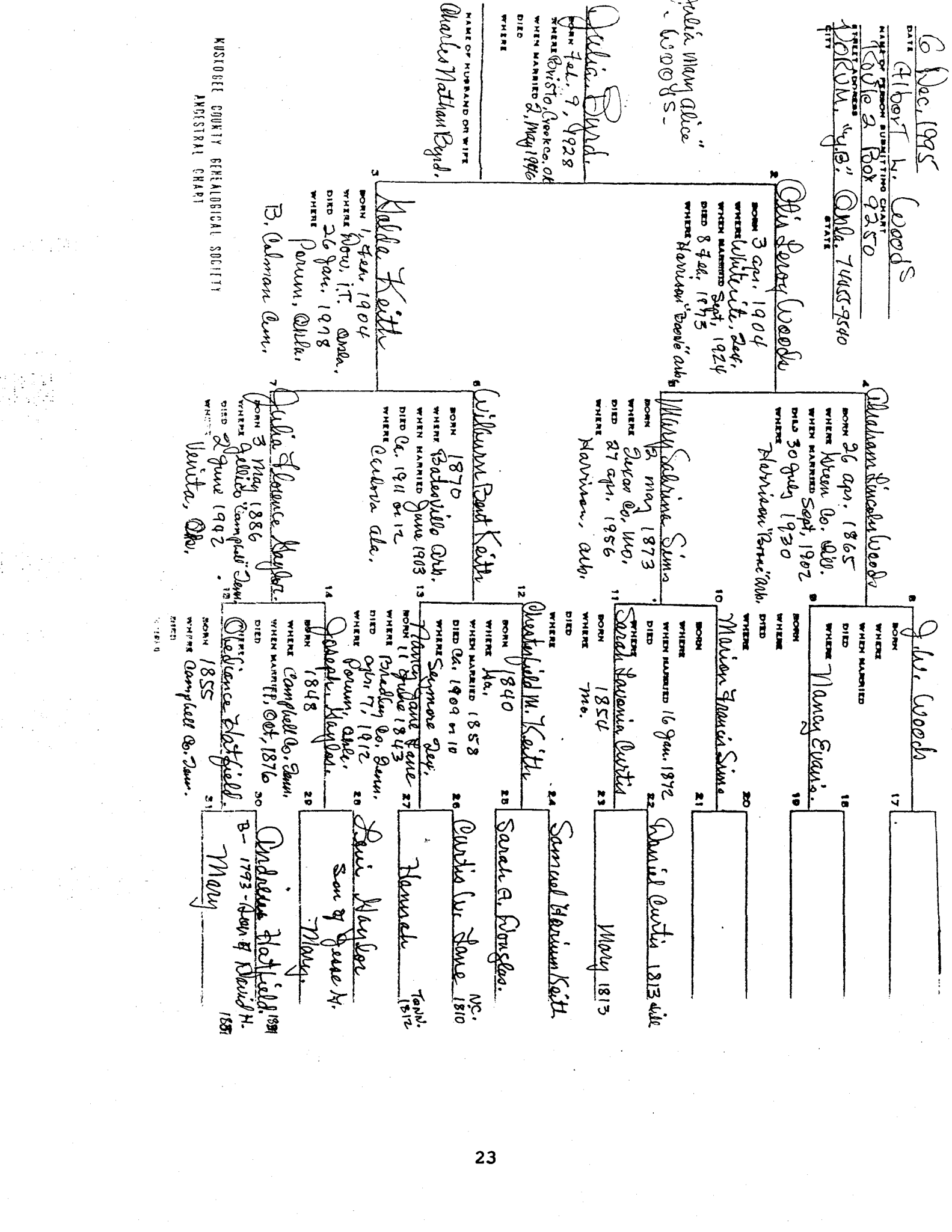
6 Dec. 1995  
 Albert W. Woods  
 NAME OF PERSON SUBMITTING CHART  
 Route 2, Box 9350  
 STREET ADDRESSES  
 YORK, "y.B." Okla. 74459540  
 CITY STATE

Julia Mary Alice  
 Woods

Julia Boyd  
 BORN Feb. 9, 1928  
 WHERE Rivista, York Co., Ok  
 WHEN MARRIED 2, May 1946  
 DIED  
 WHERE

NAME OF HUSBAND OR WIFE  
 Charles Nathan Boyd.

KANSAS COUNTY GENEALOGICAL SOCIETY  
 ANCESTRAL CHART

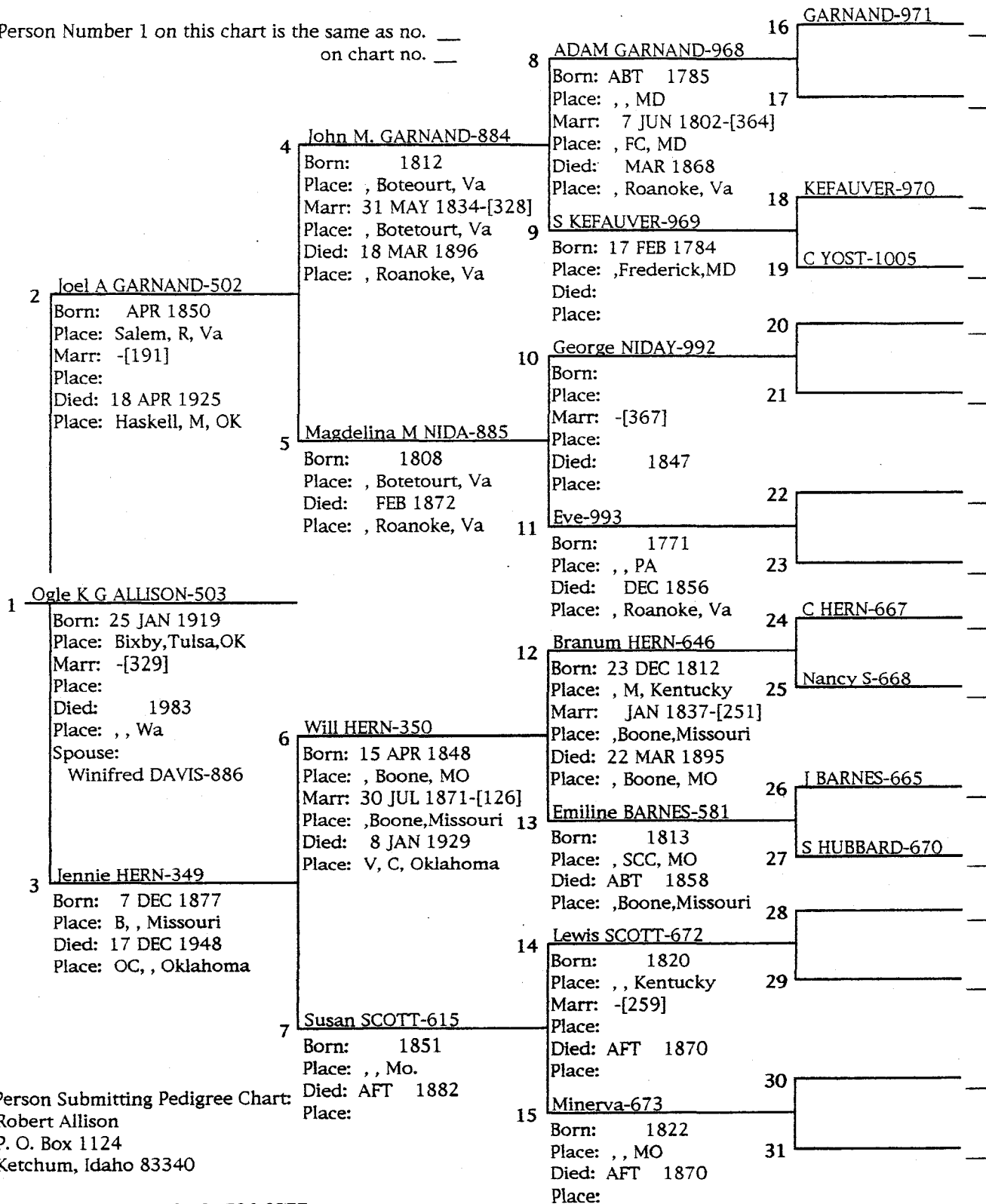


PEDIGREE CHART

Wed, Dec 4, 1996

Chart No. \_\_\_\_\_

Person Number 1 on this chart is the same as no. \_\_\_\_\_  
on chart no. \_\_\_\_\_



Person Submitting Pedigree Chart:  
Robert Allison  
P. O. Box 1124  
Ketchum, Idaho 83340

PHONE: 208 726 3827 Or 726 8377

*New Titles  
in the  
Grant Foreman Collection*

- America: A Narrative History, by George Brown Tindall, 1984. 2 vols.  
New England Historical & Genealogical Register, Index to Persons, Subjects, Places.  
2 vols.
- Royal Descents of 500 Immigrants, by Gary Boyd Roberts, 1993.
- National Society, Daughters of Colonial Wars, Lineage Book V, 1966-1982.
- Chicago Magazine, 1857. Donated by Colleen Briner.
- Laurens & Newberry Counties, S.C.: Saluda & Little River Settlements, 1749-1775, by  
Jesse Motes & Margaret Motes, 1994.
- Some Georgia County Records, vols. 3-5, by Rev. S. E. Lucas, 1973.
- Arkansas Death Record Index: 1914-1923, by Desmond W. Allen, 1996. Donated by  
Myra Gormley.
- 1860 Missouri Census, Hickory, Holt & Howard Cos. (M653, #623). Donated by Arlus  
Walters.
- 1880 North Carolina Census, Chatham, Cherokee, Chowan, Clay & Cleveland Cos. (T9,  
#958). Donated by Mary Myers.
- 1910 Mississippi Census, Copiah, Covington & DeSoto Cos. (T624, #738). Donated by  
Kathern Leader.
- 1910 North Carolina Census, Cleveland, Cherokee & Perquimans Cos. (T624-1103).  
Donated by Mary Myers.
- Consolidated Index to Compiled Service Records of Confederate Soldiers, D--Damzery  
(M253-113). Donated by Mary Myers.
- Barred and Disallowed Case Files of the Southern Claims Commission, 1871-1880. 9  
fiche donated by Kathy Carter-White.
- Indians and Intruders, by Sharron Standifer Ashton, 1996.
- George McWhorter, Sr. and Descendants of Union County, North Carolina 1735-1988,  
by Small/Starnes. Donated by Jim Voss.
- Muster and Pay Rolls of the War of the Revolution, 1775-1783. Donated by Jim Voss.
- Monroe & Conecuh County, Alabama Marriages, 1833-1880, by Colson. Donated by Jim  
Voss.
- Early Settlers of Louisiana as Taken from Land Claims in the Eastern District of the  
Orleans Territory, by Lowrie. Donated by Jim Voss.
- A Complete Guide to Heraldry, by Fox-Davies. Donated by Jim Voss.
- Townships of Effingham County, Illinois. Donated by Colleen Briner.
- Missionary Abominations Unmasked. Donated by Colleen Briner.
- The Massachusetts Locator. Donated by Colleen Briner.
- Directory: Wills & Estates Information. Donated by Colleen Briner.
- Directory: Marriage Record Information. Donated by Colleen Briner.
- Directory: Land Record Information. Donated by Colleen Briner.
- Marriage Records: Arkansas (CD-6). Donated by Myra Gormley.
- Land Records for Arkansas, Florida & Louisiana (CD-253). Donated by Myra Gormley.

*New Titles*  
(cont.)

- African Americans in the 1870 Census (CD-165). Donated by Myra Gormley.  
Roll of Honor: Civil War Union Soldiers (CD-351). Donated by Myra Gormley.  
York County, SC Minutes of the County Court, 1786-1797, by Laurence K. Wells.  
Donated by Myra Gormley.  
Search for Missing Friends, v. 5, by O'Keeffe. Donated by Myra Gormley.  
The Ancestry of Eva Belle Kempton by Smith & Sanborn. Donated by Myra Gormley.  
Settlers of Maryland, 1766-1783, by Peter Coldham. Donated by Myra Gormley.  
Settlers of Maryland, 1751-1765, by Peter Coldham. Donated by Myra Gormley.  
South Carolina Deed Abstracts 1783-1788, by Brent Holcomb. Donated by Myra  
Gormley.  
Plantagenet Ancestry of 17th Century Colonists, by Faris. Donated by Myra Gormley.  
The Barbour Collection of Connecticut Town Vital Records, v. 6-7, by White. Donated  
by Myra Gormley.  
The Directory of Family Associations, 1993-1994, by Bentley. Donated by Myra  
Gormley.  
Mayflower Increaseings, 2nd Edition, by Susan E. Roser, 1995.  
1850 Georgia, Irwin Co. Census, by James Melson. Donated by author.  
1850 Georgia, Jackson Co. Census, by James Melson. Donated by author.  
  
1850 Arkansas, Phillips Co. Census, by James Melson. Donated by author.  
1850 Arkansas, Pike Co. Census, by James Melson. Donated by author.  
1850 Arkansas, Poinsett Co. Census, by James Melson. Donated by author.  
1850 Arkansas, Polk Co. Census, by James Melson. Donated by author.  
1850 Arkansas, Pope Co. Census, by James Melson. Donated by author.  
1850 Arkansas, Prairie Co. Census, by James Melson. Donated by author.  
1850 Arkansas, Pulaski Co. Census, by James Melson. Donated by author.  
1850 Arkansas, Randolph Co. Census, by James Melson. Donated by author.  
1850 Arkansas, St. Francis Co. Census, by James Melson. Donated by author.  
1850 Arkansas, Crittenden Co. Marriages: 1843-1900, by James Melson. Donated by  
author.

Scanning the above list of new material in the Grant Foreman Collection, it becomes clear that the generosity of Myra Gormley, Jim Voss, James Melson, Colleen Briner and Mary Myers has markedly improved the collection. And their donations have covered a wide spectrum of topics. The next time you have a chance to talk or correspond with any of these donors, please say "Thank you." They deserve your recognition of excellence for their support.

# MUSKOGEE COUNTY GENEALOGICAL SOCIETY

## 1997 Membership Survey

The Board of Directors of the Muskogee County Genealogical Society is conducting this membership survey in order to gain a better understanding of the genealogical needs and desires of our membership. The results of this survey will be published in a subsequent Quarterly and will provide you with an excellent resource guide to what genealogical surnames, geographic areas, and historical dates that our membership is researching.

Let's begin...

What is your name? \_\_\_\_\_

Where do you currently reside? \_\_\_\_\_

What is your telephone number? \_\_\_\_\_ (optional)

May we include your survey answers in our Quarterly publication? \_\_\_\_

Tell us about four surnames you are researching ...

Surname	Geographic Origin	Time Period
(i.e. SMITH	Arkansas/Oklahoma	1850 )
_____	_____	_____
_____	_____	_____
_____	_____	_____
_____	_____	_____

How many months or years have you been doing genealogy? \_\_\_\_\_

On average, how many hours per week do you spend on genealogy? \_\_\_\_\_

Where do you perform most of your research (check all that apply)?

- Local library
- LDS Facility
- Regional library
- Computer Resources
- Other (list)
- \_\_\_\_\_

Do you own or have access to a computer? \_\_\_\_

Do you have computer internet access (what is your email address)? \_\_\_\_\_

Would you be interested in forming a local computer genealogy support group? \_\_\_\_

Two things I like most about doing genealogy are:

1. \_\_\_\_\_
2. \_\_\_\_\_

**MUSKOGEE COUNTY GENEALOGICAL SOCIETY  
1997 Membership Survey (continued)**

Concerning our monthly membership meetings ...

List two topics which you are interested in learning more about:

1. \_\_\_\_\_
2. \_\_\_\_\_

For the topics above, list the names of individuals (including address/phone) within the area who are available to speak free of charge or for reimbursement of transportation/lodging expenses only:

\_\_\_\_\_  
\_\_\_\_\_

Name two aspects of our meetings which you really *like*?

\_\_\_\_\_

Name two aspects of our meetings which you really *dislike*?

\_\_\_\_\_

Would you be interested in serving as a volunteer on our ...

- Membership Committee? \_\_\_  
Planning Committee? \_\_\_  
Research Committee? \_\_\_  
Library committee? \_\_\_  
Quarterly Publication committee? \_\_\_

List three other genealogical or historical societies for which you are a member:

\_\_\_\_\_  
\_\_\_\_\_  
\_\_\_\_\_

Provide any comments to help us serve you better ...

\_\_\_\_\_  
\_\_\_\_\_

*Thank-you for taking the time to complete this survey. Completed surveys may be mailed to:  
Muskogee County Genealogical Society, 801 West Okmulgee, Muskogee, OK 74401  
**PLEASE RETURN COMPLETED SURVEYS BY March 15, 1997***

MUSKOGEE COUNTY GENEALOGICAL SOCIETY  
PUBLICATIONS FOR SALE

CEMETERIES OF MUSKOGEE COUNTY, OK, Vol. I \$11.00

Includes Agency, Bemo, Boynton, Brewer, Briartown, Brushy Mountain  
Butler Creek, Council Hill, Doyle, Ft. Gibson/Anderson Bottom, Frozen  
Rock, Graves, Grayson, Plainview, Rock Grove, Starnes, Starr, Taylor,  
Walker, 2 Unidentified. 155 pages including index. Softbound.

CEMETERIES OF MUSKOGEE COUNTY, OK Vol. II \$25.00

Includes Harnage, Harris, Harris Family, Haskell, Jennings, Jobe Family,  
McClure, Middleton Chapel, Oktaha Community, Park, South Bethel,  
Summitt, 1 Unidentified. 291 pages including index. Softbound.

INDEX OF OBITUARIES AND DEATHS EXTRACTED FROM  
THE MUSKOGEE DAILY PHOENIX, 1954 - 1992.

Vol. I - Surnames A - D. (11, 073 names, 201 pages)	\$25.00
Vol. II - Surnames E - K. (11,086 names, 203 pages)	\$25.00
Vol. III - Surnames L - R. (11, 648 names, 210 pages)	\$25.00
Vol. IV - Surnames S - Z. ( 9, 908 names - 180 pages)	\$25.00

INDEX OF DEATHS EXTRACTED FROM MUSKOGEE

DAILY PHOENIX, January 16, 1930 - May 4, 1935 \$ 5.00

MARRIAGE RECORDS, MUSKOGEE INDIAN TERRITORY

FIRST U.S. COURT - NORTHERN DISTRICT, Books A, B,  
and B-1, July 1890 - March 1893. Mickey Hagan & Rae

Lindsey. 108 pages including index \$11.00

GENEALOGICAL DATA EXTRACTED FROM MUSKOGEE

WEEKLY PHOENIX, INDIAN TERRITORY, 1888 - 1892

Sheri Sharpnack Siebold, 56 pages including index. \$ 7.00

GENEALOGICAL DATA EXTRACTED FROM MUSKOGEE

WEEKLY PHOENIX, INDIAN TERRITORY, 1893 - 1897, Vol. II

Sheri Sharpnack Siebold. 57 pages including index \$ 8.00

GENEALOGICAL DATA EXTRACTED FROM MUSKOGEE

WEEKLY PHOENIX, INDIAN TERRITORY, 1898 - 1902, Vol. III

Sheri Sharpnack Siebold. 65 pages including index. \$ 9.00

-----  
Send check or money order for price plus \$2.50 each book, for postage, to

Green Leaf Publications

c/o Gary Lester

P.O. Box 134

Braggs, OK 74423



MUSKOGEE COUNTY GENEALOGICAL SOCIETY

Muskogee Public Library  
801 West Okmulgee  
Muskogee, Oklahoma 74401

APPLICATION FOR MEMBERSHIP

Name \_\_\_\_\_ Date \_\_\_\_\_

Address \_\_\_\_\_

\_\_\_\_\_  
City State Zipcode Telephone

\_\_\_\_\_ New Membership

\_\_\_\_\_ \$12 Individual \_\_\_\_\_ \$14 Family

January - December 19\_\_\_\_\_

*Make check payable to:* Muskogee County Genealogical Society

MCGS meetings are held the 4th Thursday of each month at 7 p.m. (with the exception of July and August) at the Muskogee Public Library, 801 West Okmulgee, Muskogee, Oklahoma.

The MCGS Quarterly is free to members. Back issues are available at \$3 each, plus \$1 for postage. Queries are free to members; \$1 for non-members. Articles and contributions for the quarterly should be sent to the above mailing address.

*SURNAMES YOU ARE RESEARCHING:*

<u>Name</u>	<u>Event</u>	<u>County</u>	<u>State</u>	<u>Year</u>

Comments:

I hereby release this information for a surname exchange or publication by the MCGS.

Signature \_\_\_\_\_ Date \_\_\_\_\_

Please submit an ancestor chart with your application.