

NEW PUBLICATION
BY
MUSKOGEE COUNTY GENEALOGICAL SOCIETY

INDEX TO DIVORCE CASES

MUSKOGEE COUNTY, OK

1914 - 1930

Compiled by
Jimmie D. Benson
and
Loretta Dillon Benson

This index has 5100 names. It gives the names of the parties filing for divorce, the filing date, and the case number.

These records have been microfilmed and may be ordered by case number from your Family History Center.

The actual divorce cases are housed in the County Court Clerk's office, County Court House, Muskogee, OK.

Price: \$15.00 + p. & h. \$2.50

Order from
Greenleaf Publications
P.O. Box 134
Braggs, OK 74423

TABLE OF CONTENTS

Muskogee County Genealogical Society

Volume 14 No. 3

September 1997

<u>TITLE</u>	<u>PAGE</u>
<u>New Publication - "Index to Divorce Cases, Muskogee Co. OK 1914 - 1930"</u>	
<u>Officers.....</u>	<u>A</u>
<u>President's Letter.....</u>	<u>59</u>
<u>Boat Nears Muskogee.....</u>	<u>60</u>
<u>"City Of Muskogee".....</u>	<u>61</u>
<u>Washington School, 1st Grade, Muskogee, OK.....</u>	<u>63</u>
<u>Washington School.....</u>	<u>64</u>
<u>1912 Muskogee Co. School Census, Ft. Gibson.....</u>	<u>66</u>
<u>1908 Postal Cards Mailed to Property Owners.....</u>	<u>72</u>
<u>New Members.....</u>	<u>74</u>
<u>"Around the Town in Muskogee".....</u>	<u>74</u>
<u>"Hey, I'm Researching that Surname, too!".....</u>	<u>75</u>
<u>Surnames Our members Are Researching.....</u>	<u>76</u>
<u>Muskogee Co. Genealogical Society Membership List.....</u>	<u>82</u>
<u>Extracts From the Muskogee Weekly Phoenix - 1888-1892.....</u>	<u>83</u>
<u>News from the Porum Journal.....</u>	<u>84</u>
<u>Nuptials, Muskogee.....</u>	<u>84</u>
<u>Men Badly Burned.....</u>	<u>84</u>
<u>Porum Business Men.....</u>	<u>85</u>
<u>Taxpayers of Porum Township, 1916.....</u>	<u>86</u>
<u>Queries.....</u>	<u>90</u>
<u>Virginia Long - Ancestor Chart.....</u>	<u>91</u>
<u>Publications of Muskogee Co. Genealogical Society.....</u>	<u>92</u>

MUSKOGEE COUNTY
GENEALOGICAL SOCIETY
801 WEST OKMULGEE
MUSKOGEE, OKLAHOMA 74401

*Volume 14 No. 3
September 1997*

OFFICERS

Mary Dalton Myers President
Paul Betow Vice-President
Eddie Jeffries Secretary
Mary McLain Downing Treasurer
Gary W. Lester Past President
Ron Riede Member-at-Large
Linda Shackelford Brooks Member-at-Large

MEETINGS: Society meetings are held on the fourth Thursday of each month (except July and August) at 7:00 p.m. at the Muskogee Public Library, 801 West Okmulgee, Muskogee, Oklahoma.

BOOK REVIEWS: Reviews of donated books and materials will receive mention in the Quarterly and at society meetings. Thereafter, they will be housed in the Grant Foreman Room of the Muskogee Public Library for public use.

NOTICE TO NEW MEMBERS: Those who join during any month of the year after the membership month of January will receive all Quarterlies that have been published that year.

M.C.G.S. QUARTERLY: The Quarterly is published in March, June, September and December of each year. Queries are free to members; \$1.00 for non-members. Back issues are available at \$3.00 each, plus \$1.50 for postage.

The Muskogee County Genealogical Society and its Board of Directors do not assume responsibility for errors of fact or judgment on the part of contributors.

MEMBERSHIP - \$12.00 - INDIVIDUAL \$14.00 - FAMILY

FROM THE PRESIDENT

The summer certainly flew by, and soon the Society will be starting back for the fall. I hope you had a productive summer.

Muskogee will soon be celebrating its centennial. The historical societies are very busy planning for this celebration. Roger Bell from the Three Rivers Historical Society has contacted the Board about participating in a cemetery tour. We would be involved in researching people from Muskogee's past and presenting a short talk or dramatization at their gravesite. What do you think? It seems like an excellent way to make use of our members' many talents and to showcase our organization. We will discuss it more at the Sept. Meeting.

In case you haven't already heard, Myra Gormley will be here in Muskogee on Sept. 20, to conduct a mini workshop on Genealogy on the Internet. She is an author, certified genealogist, a feature author for the Los Angeles Times Syndicate, and a Muskogee native. She also designed and maintains our web page on the Internet. The workshop will be from 9:00 A.M. to 12:00 P.M. at the Muskogee Public Library. The cost is \$10.00. The Society is grateful to Myra for doing this workshop and to all the members who are involved in the planning and preparations for this event.

The American Federation of Genealogical Societies Convention in Dallas is rapidly approaching. The sessions sound most informative. I hope some of you will be able to attend.

Help! We need an editor for the quarterly as well as workers and contributors. Think about it. The Society needs your contributions.

Upcoming events:

- | | |
|----------|----------------------------------------------------------------------------------------------------|
| Sept. 7 | Board Meeting 6:00 P.M. MPL. |
| Sept. 20 | Myra Gormley's workshop on Internet. 9:00 A. M. to 12:00 P.M. |
| Sept. 24 | Monthly meeting at 7:00 P.M. The program will be on Masonic records with Andy White from Checotah. |
| Oct. 5 | Board Meeting 6:00 P.M. at MPL |
| Oct 22 | Monthly Meeting. Hands On Experience With Internet. Location to be Announced. |
| Nov. 2 | Board Meeting 6:00 P.M. at MPL. |
| Nov. 19 | Monthly Meeting at 7:00 P. M. MPL. Program on Confederate Records (Tentative) |
| Dec. 7 | Board Meeting 6:00 P. M. at MPL. |
| Dec. 17 | Christmas Potluck and Election of Officers (Possibly at my house if Board agrees.) |

Looking forward to seeing you soon!

Mary Myers

BOAT NEARS MUSKOGEE HOME; IS A DREAM

Muskogee Daily Phoenix, July 19, 1908

The "City of Muskogee" is home and navigation on the Arkansas river from Muskogee is a reality and not a dream. This means that this city is to receive the advantage of river freight rates and that the last straw is about to be removed which stood in the way of making it one of the leading manufacturing cities of the country.

Take out your note book and now the fact that it was 9:17 a.m. on the morning of Saturday, July 18, that the "City of Muskogee" dropped anchor 150 yards below the Hyde park landing, and for the first time in 40 years a boat made the trip up the Arkansas from its mouth to Muskogee. It not only made the trip well and advertised the new big city of the Southwest as it has never been advertised before, but it also sailed the Mississippi and Ohio like an ocean greyhound and demonstrated to the people of the east and south that when it comes to enterprise and determination the Muskogee Commercial club and the valiant boosters are in a class all by themselves.

While the Jubilee program provided that the boat was not to arrive at Hyde Park landing until next Monday at 2 p.m., Capt. Cook, who knows the Arkansas, decided not to take any chances. With a falling river and a promise to bring the boat home, Cook instructed Captain Oatman to make good this morning, and like a true water dog she passed the river towns between Muskogee and Webbers Falls like the Twentieth Century Limited, and when the day had gotten fairly started the Frisco bridge near Hyde Park was sighted at 9 o'clock, the bridge was cleared, and the trip was at an end. The boat was home.

There was one long blast from the whistle, Captain Cook gave a shout of joy, his baby clapped its hands in glee, Mrs. Cook cried with joy, correspondent Colier ceased his argument with Judge Lawrence, and D.P.. Hall, the last of the boosters, made a hurricane jump to dry land so that he could have the credit of being the first man to make the trip from Ft. Smith to Muskogee.

The boat made the trip from Ft. Smith to Muskogee in a little more than one day, and if the stream had been kept clear from snags, Captain Cook said they he could have made it in a day easily.

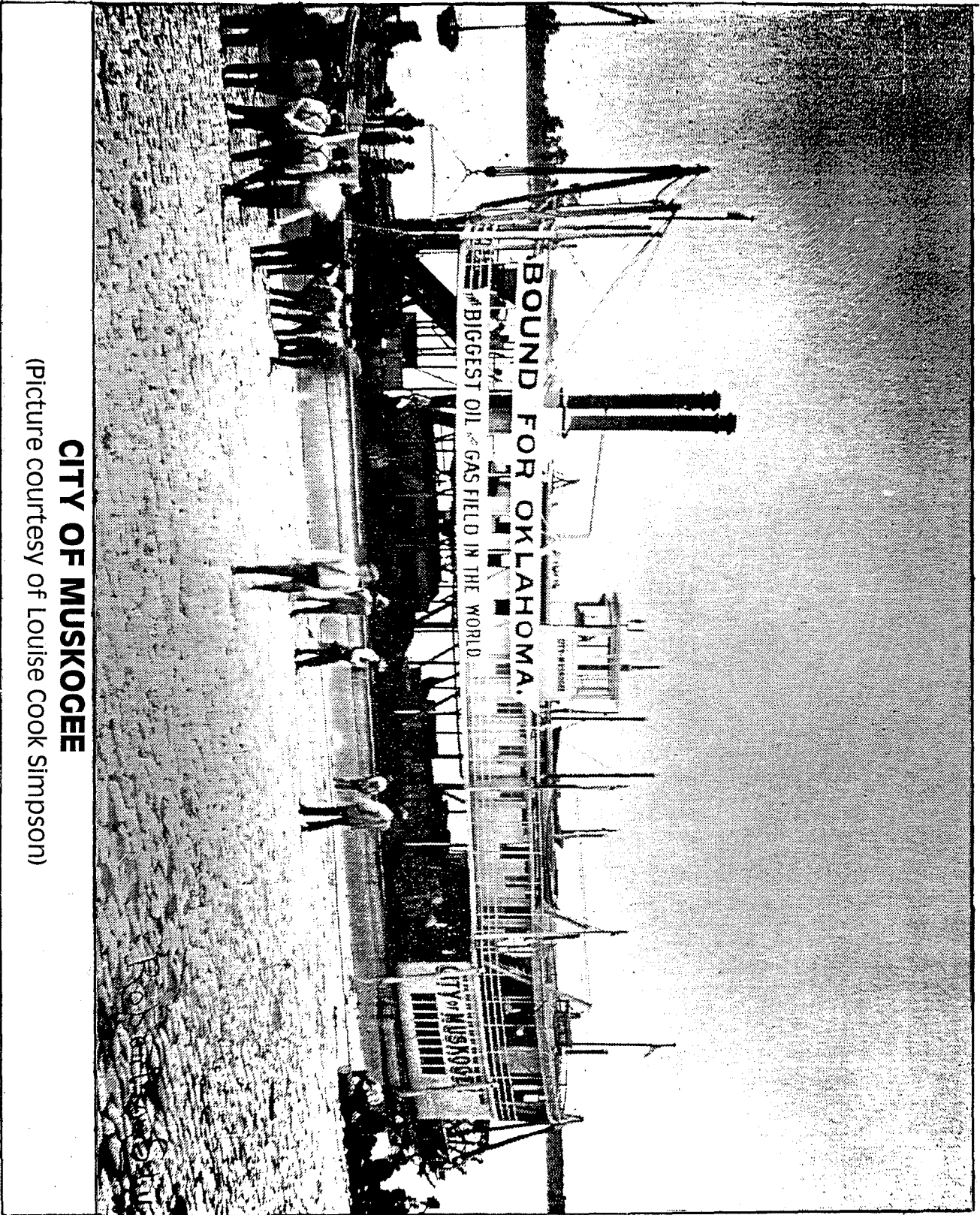
President Jackson of the Commercial club, Judge Tisdell, D.N. Fink, Chris Bradley, Mr. Ramsey and all the boosters were in high glee when the pleasant word was received that the boat was in, and there was a general celebration all around.

Now that the trip has been made in safety and Muskogee enterprise has demonstrated that the Arkansas is navigable even in July, it is up to Congress to make the necessary appropriation to clear the stream and remove all snags and sandbars. What the navigators need and what they insist on having is a definite channel. When they get this it will be time to ask for an appropriation for dams and locks.

The trip of the "City of Muskogee" was a success in every particular. The boat left Jeffersonville, Indiana on July 2, made the trip to Cincinnati over night, spent the third in Cincinnati, the fourth in Louisville, and from there on down the Ohio and Mississippi by slow stages stopping at Columbus, Cairo, Paducah, Memphis, Pine Bluff, Little Rock and Fort Smith.

Three cheers for Muskogee and the "City of Muskogee."

Louise Cook Simpson, daughter of Captain Ernest Cook and a member of our Muskogee County Genealogical Society supplied us with the articles about the "City of Muskogee" and is "the baby who clapped its hands in glee" when the boat landed at Hyde Park.



CITY OF MUSKOGEE

(Picture courtesy of Louise Cook Simpson)

THE CITY OF MUSKOGEE

The sternwheel boat had a wood hull and was 4.7 feet deep from the bottom timbers to the main deck floor. It had two boilers, each 38 inches by 28 feet.

"The Muskogee boosters paid \$10,000 for the boat," said Louise Cook Simpson of Muskogee. Her father was Ernest Cook, the boat's captain. "The boat was built solely to promote Muskogee and the idea of making the Arkansas River navigable as far as Muskogee."

Simpson recalls the stories her father used to tell of the boat and that first trip. She has his ship log showing how much the crew was paid. There also is a record of expenses for mooring and loading and unloading supplies along the way.

Captain Cook's log shows the second captain was paid \$200 for the trip. The boat's cook received \$2 per day. Among supplies were a 25-cent pair of scissors, \$12 worth of meat, \$2 worth of fruit, \$1 worth of bread, and \$1.80 for a deck hand who spent nine hours loading nails.

"The boat originally was supposed to get to Muskogee on July 20, 1908," Simpson said. "But when they got to the Webbers Falls area, the river's level was falling so rapidly they decided to continue on to Muskogee. They got here July 16."

By the time the boat made Memphis, Tenn., many of the boosters left to return to their businesses in Muskogee.

At Fort Smith, Ark., the boat had to stop and take the smoke stacks down because they wouldn't fit under the Frisco Railroad bridge, Simpson said.

"At Memphis, my father wired my mother and asked her to bring me and meet them at Little Rock.

We rode from Little Rock to Muskogee, I was only 1 year old and don't remember the ride." Cook's wife and daughter became the first female passengers ever to ride on the boat.

The group of businessmen hoped to get an appropriation to open the waterway to navigation. They thought if the "City of Muskogee" made the trip it would show other industries that goods and wares could be brought up the river and create business traffic. (It took 62 years before navigation finally was accomplished in 1970)

Though Simpson doesn't remember much about the boat, she does recall visiting Hyde Park as a youth when the area was complete with swimming pool and amusement park. Street cars rolled from downtown Muskogee to the western bank of the Arkansas River where the park was built.

Captain Ernest Cook was from Columbus, Kentucky. His father, John B. Cook was born in Kentucky. He fought in the Battle of Belmont in the Civil War. Ernest's grandfather, William B. Cook, moved from Maryland to Kentucky about 1819. William and his brother Richard owned 3 Paddlewheelers that carried passengers on the Mississippi. During the Civil War, the boats were confiscated by the Union Army. He and about a dozen men and women who were Southern sympathizers were sent to Canada for the duration of the war.

The cover of the 1990-91 Muskogee telephone directory featured a full-color picture of a barge on the McClellan-Kerr Navigation System on the Arkansas River, in tribute to the impact of navigation on this area.

"Because the Port of Muskogee is the true headwaters of the largest federal domestic public works program ever undertaken, we wanted to show our appreciation for their contribution in the economic development of Muskogee and eastern Oklahoma," said Cromley the local Southwestern Bell Manager.

Opened in 1970, more than 3 million tons of goods moves on the Oklahoma portion of the waterway each year. Materials shipped include construction materials, petroleum, coal, chemicals and minerals, steel products, grains and other agricultural products and military vehicles and equipment. (The tonnage is larger each year.)

WASHINGTON SCHOOL -- FIRST GRADE (1913-14)
Muskogee, OK



First Row: 2. Arthur Merchant 4. Randy Eversole 5. James Booth 7. Harmon Williams
8. Dick Stokes 9. Howard Whitfield 10. Wayne Smith 11. Gussie Brown 12. Louise
Cook (Simpson).

Second Row: 16. Eleanor Ginsburg 17. Roberta Anderson 18. Helen Beutiespatcher
19. Eathul Montgomery 20. Minnie Sallee 21. Theo Looper.

Third Row: Principal Charles B. Smith 29. Wear Weathersby(?) 34. Helen Granger.

~~~~~  
Picture Courtesy of Louise Cook Simpson - Member of Muskogee Co. Genealogical Society.

### Do You Remember When?

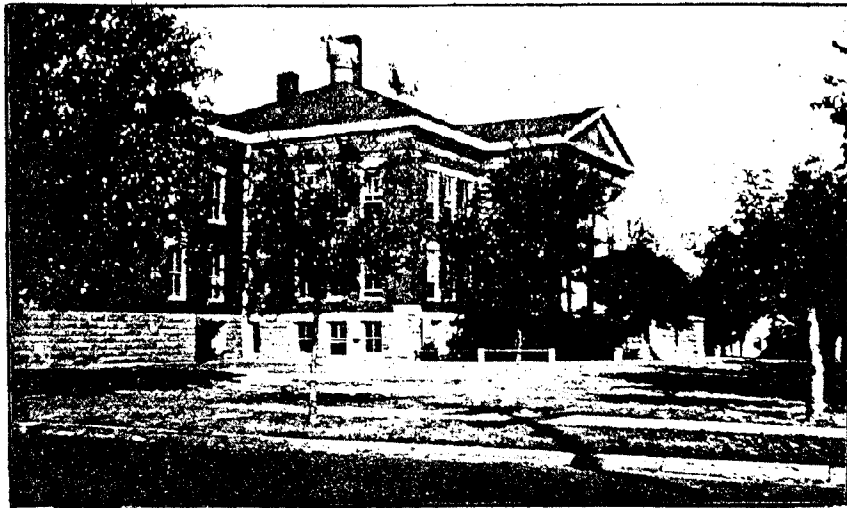
"F" Street wasn't paved and the teachers had a hard time getting the "kids" to go home because they wanted to stop and catch crawdads there on the corner of "F" and Dayton.

Janitor Museter was in Washington. There aren't many children who went through Washington without being acquainted with Mr. Museter.

Mr. Smith had a picture show every Friday night to get money for the art department and to get money for a new victrola.

School wasn't very old and Simmie Cutler Rose taught there. She was the first teacher to teach in the basement.





**WASHINGTON SCHOOL - MUSKOGEE, OK**

In 1904, when the "city dads" of Muskogee appropriated one block for educational purposes, that block at Dayton and F. Streets was on the outskirts of the city. That block became the home of Washington School.

Even before Oklahoma was a state, the town of Muskogee had something of which the people were indeed proud -- two public schools, one of which was Washington.

In 1904, with Miss Edna Allen as principal and Misses Bertha Bowman, Lucille Smith, Georgia Hannon, Lennie B. Caroway, Irene Brasel, Lotta Whitesides, Maude Hammer, Mattie Martin, Laura Hardin, and Mrs. Sugar as teachers, the school was opened to children from the first to eighth grades. Miss Lonie Brewer and Mrs. Anna Hellams were once pupils, and later became teachers at Washington. When the Junior High was organized, seventh and eighth grades were moved to the high school building.

During the second year of the school, Mr. O.H. Baxter took the place of Miss Allen as principal. In the spring of this year, Mr. Baxter, with the help of the larger boys, took a wagon and went to the country for trees and planted them on the school ground.

Washington led the first inter-school baseball games and for many years people looked forward to these games. Soccer was begun in 1914.

Mr. John T. Hefley became principal in 1906 and remained until 1908. The next principal was Mr. C.B. Smith. He adequately filled that position until 1923, during which time the school grew and developed into an educational institution of which Muskogeeans were proud. Mr. Smith died in 1923. Mrs. Laura Hardin then became principal.

The first Parent-Teacher Association was organized in 1909 with Mrs. Alex Todd as its first president. Following that year, Mrs. Tom King became president with Mrs. H.B. Egan, vice president and Mrs. F.W. Billingsly as Secretary-treasurer.

January 5, 1922 fire broke out in the furnace room. The room and hall above the furnace room were badly burned. The entire building was smoke damaged.

After this mishap an addition of four rooms was made, two on the east side and two on the west. A one room brick annex had been built on the northeast corner of the ground, which the school owned in 1910.

Touch football started in 1923. In 1925 Washington team won the Dyke Wiley Cup with Joe Hannas as their leader. The Dyke Wiley, the prize given by Mr. Wiley, a beloved citizen of Muskogee, was offered the first time in 1925. Julian Brewer and Dan Kennedy were leaders in athletics during this time.

Faculty of Washington during the early years were: Miss Laura Hardin, principal; Emma L. Gray; Nina Ruth Cain; Mary Speed Cook; Margaret McLaurine; Elizabeth Guinn; Glenna Walker; Lola Black; Lonie Brewer; Louise Scales; Mrs. Anna Hellams; Mrs. Mary Doud; Mrs. Nora Smith; Miss Eloise Mays and Miss Cordia V. Callahan. Miss Emma L. Gray came to Washington in 1906. Mrs. Addie Norrid, a teacher, who was of Cherokee descent and a native of Indian Territory, was employed in 1912 and served until her death in 1922.

One of Washington's boys, Ancil "Yank" Tipton was killed by falling timbers while serving Uncle Sam during World War I. The "Yank Tipton Post" is named for him.

In the year 1904-05, the pupils spent \$12.00 for books. This was the beginning of a school library. The ground which the city bought for the purpose of erecting a school cost \$11,772.64; the building and improvements, \$42,267.94; the heating plumbing and electricity, \$5,000.00; furniture and apparatus, \$1,217.80, making a total of \$60,258.38.

The school building is no longer at Dayton and F. Street. FairHaven N. 2, a Retirement Home now occupies the land.

\_\_\_\_\_ Material extracted from "Three Decades in Muskogee City Schools 1898-1929"



**Charles B. Smith**  
**Principal, 1908-1923**

**1912 MUSKOGEE COUNTY, OK SCHOOL ENUMERATION  
DISTRICT #22, FT. GIBSON**

| <u>PARENT</u> | <u>CHILDREN</u>       | <u>BIRTH</u> |       | <u>AGE</u> |
|---------------|-----------------------|--------------|-------|------------|
| L. Ludington  | Ludington, Henry      | Jul          | 1896  | 16         |
|               | Ludington, Aner (?)   | Apr          | 1898  | 14         |
|               | Ludington, Ethel      | Jul          | 1900  | 12         |
|               | Ludington, Lillian    | Aug          | 1904  | 8          |
| G.F. Seaton   | Seaton, Elnor (Abner) | Jul          | 1895  | 17         |
|               | Seaton, Tom           | Aug          | 1897  | 15         |
|               | Seaton A.             | Mar          | 1905  | 7          |
| J.P. Icem     | Icem, G.              | Jul          | 1894  | 18         |
|               | Icem, E.              | Jun          | 1895  | 17         |
| E.J. Bykes    | Bykes, Nancy          | Jul          | 1899  | 13         |
| John Leport   | Leport, Mandy         |              | 1898  | 14         |
| J.W. Fisher   | Fisher, Glenn         | Sep          | 1900  | 11         |
| Ruth Fisher   | Fisher, Steller       | May          | 1903  | 8          |
| John Leeds    | Griffin, Seasell      | Oct          | 1897  | 15         |
| Ed Fisher     | Fisher, Vera Lee      | Mar          | 190-  | 6          |
| T.E. Williams | Williams, Bessery     | Apr          | ----- | (6)        |
| J.H. Wood     | Wood, Thomas          | Arp          | 1897  | 15         |
|               | Wood, Lottey          | May          | 1896  | 16         |
| Sam McCutchen | McCutchen, L.D.       | Aug          | 189_  | 17         |
|               | McCutchen, S.E.       | Sep          | ----- | 14         |
|               | McCutchen, Youle(?)   | Aug          | ----- | 12         |
|               | McCutchen, Imer       | Aug          | 1902  | 9          |
|               | Y (?)                 | Nov          | 1905  | 7          |
| G.B. Pennell  | Pennell, Olen         | May          | 1894  | 17         |
|               | Pennell, Louies       | Jan          | 1891  | 20         |
|               | Pennell, Addison      | May          | 1898  | 13         |
|               | Pennell, Juney        | Jan          | 1900  | 11         |
|               | Pennell, Alfred       | Apr          | ----- | 8          |
|               | Pennell, (illegible)  | Dec          | 190_  | 6          |

| <b>PARENT</b>   | <b>CHILDREN</b>       | <b>BIRTH</b> |        | <b>AGE</b> |
|-----------------|-----------------------|--------------|--------|------------|
| Chadwick, A.B.  | Chadwick, Janeva      | Jun          | 1901   | 10         |
| Albert Anderson | Anderson, Leo         | Jul          | 1895   | 16         |
|                 | Anderson, (illegible) | Jan          | 1893   | 18         |
|                 | Anderson, Mark        | Aug          | 1892   | 20         |
|                 | Anderson, Amos        | Feb          | 1901   | 9          |
| S.J. Chase      | Chase (illegible)     | Feb          | 1893   | 18         |
| Sala Smith      | Smith, J.R.           |              | 1901   | 11         |
|                 | Yates, Ethel          | Mar          | -----  | 18         |
| JIM Maddex      | Maddex, Randy         | Mar          | 1906   | 6          |
| O.E. Kreipke    | Kreipke, Christine    | Mar          | 190(5) | 6          |
| W.H. Prince     | Prince, Royce         | Feb          | 1905   | 8          |
|                 | Prince, May           | Jul          | 190(6) | 6          |
| J.R. Rich       | Rich, B.D.            | Jul          | 1901   | 10         |
| S.J. Boyd       | Boyd, Lige            | Mar          | 1899   | 12         |
|                 | Boyd, Ileana          | Jul          | 1902   | 9          |
|                 | Boyd, Florey          | Jan          | -----  | 6          |
| W.W.. Hoover    | Hoover, Titus         | Sep          | 1900   | 11         |
| Sarah Clark     | Clark, Ader           | Jul          | 1893   | 19         |
|                 | Clark, Tate           | Apr          | 1895   | 17         |
| E. Witt         | Witt, Cladys          | Jan          | 1896   | 16         |
| F.B. Gibson     | (illegible)           | Sep          | 1899   | 12         |
| T. Hoover       | Hoover, Bessie        | Jul          | 190(7) | 6          |
| George Turley   | Turley, Vernice       | Jun          | 1901   | 10         |
|                 | Turley, Flosey        | Jan          | 1903   | 8          |
|                 | Turley, Gorgey        | Nov          | 1905   | 6          |
| C.L. Turner     | Turner, Edger         | Nov          | 1899   | 12         |
| WILL Gilliland  | Gilliland , Poll (?)  | Jul          | 1902   | 9          |

| <u>PARENT</u>        | <u>CHILDREN</u>          | <u>BIRTH</u> |       | <u>AGE</u> |
|----------------------|--------------------------|--------------|-------|------------|
| SANK, Vann           | (illegible)              | Sep          | ----  | 15         |
| S. Ogeans            | Ogeans, M.               | -----        | ----- | 14         |
|                      | Ogeans, M.               | -----        | ----- | 8          |
| Emer Younger         | Younger, M.              | Feb          | ----- |            |
|                      | Younger, M               | Aug          | ----- |            |
| A. Shaw<br>Eula Shaw | Olher (?)                | Oct          | 1904  | 7          |
| Nancy Johnson        | Johnson, Nance           | Nov          | ----- | ---        |
| Lucy Washington      | Washington(illegible F.) | Jun          | 1900  | 11         |
|                      | Washington " M           | Sep          | 1903  | 8          |
| Ben McIntosh         | McIntosh, Carey          | Oct          | 1900  | ?          |
|                      | McIntosh, J.             | Jul          | 1902  | ?          |
| Tom Walker           | Walker, Chalet           | Feb          | 1891  | 20         |
|                      | Walker, (illegible)      | Feb          | 1892  | 18         |
|                      | Walker, Frankey          | Mar          | 1898  | 13         |
|                      | Walker, Ramon            | Sep          | 1903  | 7          |
|                      | Walker, Ollie            |              | 1901  | 10         |
|                      | Sanders, Carrey          | Sep          | 1893  | 17         |
| George Wright        | Wright, Willie Joe       |              | 1901  | 10         |
| Ed Harris            | Harris (?)               | Jul          | 1896  | 15         |
|                      | Harris, Tonce            | Mar          | 1900  | 11         |
|                      | Harris, Albert           | Apr          | 1903  | 8          |
| Charles Ogan         | Ogan, Eide               | Dec          | 1900  | 11         |

#####

Dist #22, Acting Clerk - O.C. Kreipke

Notary - Hower Anderson

Summary: White Males - 24

Colored Males - 13

White Females - 32

Colored Females - 9

Aggregate 78

**1912 Muskogee Co., OK School Enumeration**  
**DISTRICT # 23, Ft. Gibson**

| <u>PARENT</u>   | <u>CHILDREN</u>        | <u>BIRTH</u> |       | <u>AGE</u> |
|-----------------|------------------------|--------------|-------|------------|
| Jas R. Trippard | Trippard, Jas. Raymond | Aug 16,      | 1905  | 6          |
| W.B. McElhaney  | McElhaney, Charles A   | Apr 3,       | 1895  | 16         |
|                 | McElhaney, William     | Dec 27,      | 1896  | 14         |
|                 | McElhaney, John        | Apr 14,      | 1899  | 12         |
|                 | McElhaney, George      | Jan 26,      | 1901  | 10         |
| Dave Cruse      | Cruse, Pirley          | Aug 7,       | 1904  | 7          |
| C.C. Tripps     | Tripps, J.J.           | Feb 24,      | 1892  | 19         |
|                 | Tripps, Mary           | May 27,      | 1895  | 16         |
|                 | Tripps, Hattie         | Sep 11,      | 1903  | 8          |
| G.W. Todd       | Todd, Jessie           | Aug 15       | ----- | 17         |
|                 | Todd, Austian          | Feb 5,       | ----- | 15         |
|                 | Todd (Franklin)        | Oct 10       | ----- | 13         |
|                 | Todd, William          | Apr 12       | ----- | 9          |
|                 | Todd, Charles          | Apr 14       | ----- | 7          |
|                 | Helsley, Mirtie        | Aug 24       | ----- | 17         |
| A.L. Reser      | Thompson, Ellen F.     | Nov 13,      | 1898  | 13         |
|                 | Thompson, Ludy         | Jan 30,      | 1902  | 9          |
| Jack Wagner     | Wagner, Edna           | Feb 12,      | 1904  | 7          |
| John Hall       | Hall, Martha           | Apr 20,      | 1896  | 15         |
| John Chewming   | Chewming, Ralph        | Jan 17.      | 1901  | 11         |
| L.M. Spurgeon   | Spurgeon, L.C.         | Mar          | 1906  | 6          |
| P.Y. Tonix      | Tonix, Mirtle          | Jul 15       |       | 14         |
|                 | Tonix, Berry           | Jan 22       |       | 10         |
|                 | Tonix, Frank           | Sep 4        |       | 20         |
|                 | Tonix, Bill            | May 16       |       | 18         |

| <b>PARENT</b> | <b>CHILDREN</b>   | <b>BIRTH</b>  | <b>AGE</b> |
|---------------|-------------------|---------------|------------|
| M.V. Benge    | Benge, Ruth       | Oct 9, 1894   | 17         |
|               | Benge, Leo        | Jan 10, 1896  | 16         |
|               | Benge, C. Starr   | Jul 29, 1900  | 11         |
|               | Benge, George     | Jan 18, ----- | 9          |
|               | Rowe, Jack        | Dec 20, 1900  | 11         |
| G.W. Sullivan | Sullivan, Jimmie  | Jul 23, 1898  | 13         |
|               | Sullivan, Edith   | Mar 11, 1901  | 11         |
|               | Sullivan, Flossie | Feb 14, 1904  | 7          |
| Mack Adair    | Adair, William    | Jul 12, 1893  | 18         |
|               | Adair, Emma       | Sep 9, 1895   | 16         |
|               | Adair, Jossie     | Oct 29, 1897  | 14         |
|               | Adair, Mack       | Nov 25, ----- |            |
| R.A. Bailey   | Bailey, Alert     | Dec 17, 1893  | 18         |
|               | Bailey, Bertie    | Sep 18, 1898  | 14         |
|               | Bailey, Georgie   | Aug 17, 1903  | 9          |
| J.H. Barnett  | Barnett, Roy      | Nov 23, 1905  | 6          |
| James Ford    | Ford, Alfred      | Sep 25, 1904  | 8          |
| John Chambers | Chambers, Tempe   | Feb 27, 1899  | 11         |
| W.M. Hall     | Hall, Sedalia     | Sep 14, 1898  | 12         |
|               | Hall, Hilda       | Dec 25, 1890  | 10         |
|               | Hall, Helen       | Jan 29, 1895  | 7          |
| George Vann   | Vann, Lilie       | Nov 10, ----- | 17         |
|               | Vann, Gygie (?)   | Jul 12, ----- | ---        |
|               | Vann, Jim         | Apr 12, ----- | 15         |
| Maggie Vann   | Emma Vann         | Aug 25, 1903  | 9          |
| Manuel Wilson | Wilson, Thomas    | Sep 25, 1892  | 17         |
|               | Wilson, Griggs    | Dec 17, 1900  | 12         |
| Jim Collins   | Collins, J.C.     | Aug 14, 1902  | 9          |
|               | Collins, Pairlee  | Nov 14, 1903  | 8          |
|               | Collins, George   | Oct 2, 1905   | 6          |

| <u>PARENT</u>     | <u>CHILDREN</u>      | <u>BIRTH</u> | <u>AGE</u> |
|-------------------|----------------------|--------------|------------|
| Polly Ross        | Ross, Henry          | Apr 1893     | 17         |
|                   | Thompson, Miloy      | Jan 16 1898  | 14         |
| Cornelius Nave    | Nave, Dona           | Dec 27 1893  | 17         |
|                   | Nave, Willie         | Dec 4 189-   | 13         |
|                   | Nave, Margaret       | Aug 21 1900  | 11         |
|                   | Nave, Arthur         | Oct 12 1903  | 8          |
| Dave Tolton       | Tolton, Luvennia     | Aug 16 1895  | 14         |
|                   | Tolton, Sarah        | Apr 20 1899  | 13         |
|                   | Tolton, Guzela (?)   | Nov 22 1900  | 12         |
|                   | Tolton, Charley      | Cec 15 1895  | 17         |
| July Nivins       | Nivins, Jessie       | Aug 14 1899  | 13         |
|                   | Nivins, Harrison     | Oct 17 1900  | 12         |
|                   | Nivins, Web          | Feb 26 1902  | 10         |
|                   | Nivins, Denis        | Apr 26 1904  | 8          |
|                   | Nivins, Emberg (?)   | Oct 9 1905   | 7          |
|                   | Nivins, Beckie       | Jun 17 1906  | 6          |
| S.T. Collins      | Collins, Frances (?) | Feb 3 1900   | 12         |
|                   | Collins, Charley     | May 11 1902  | 10         |
|                   | Collins, Ezell       | May 4 1904   | 8          |
|                   | Collins, William     | Nov 25 1905  | 7          |
| George W. Elliott | Elliott, Martha      | Mar 7 1892   | 20         |
|                   | Elliott, Mary E.     | Feb 2 1893   | 18         |
|                   | Elliott, Ca(?)       | Jan 24 1896  | 15         |
|                   | Elliott, Lester      | Mar 17 1898  | 13         |
|                   | Elliott, Pennie      | Mar 25 1901  | 10         |
|                   | Elliott, Jessie      | Jan 21 1903  | 9          |
|                   | Elliott, Lilla       | Mar 30 1905  | 6          |

#####

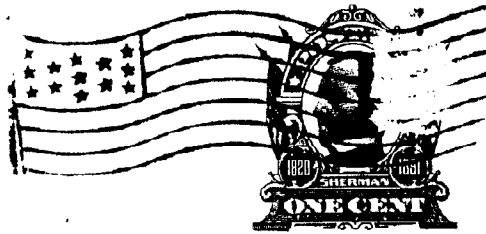
Summary:

|               |           |                 |           |
|---------------|-----------|-----------------|-----------|
| White Males   | 26        | Colored Males   | 15        |
| White Females | <u>17</u> | Colored Females | <u>24</u> |
|               | 43        |                 | 39        |

Aggregate: 82

Clerk of School District 23, Muskogee County, OK - 15 June 1912  
Notary: John G. Hower





THIS SIDE IS FOR THE ADDRESS ONLY.

*E. Paxson,  
Muskogee Title & Co  
Muskogee  
Okla.*

Dear Sir:—

The City Council is ready to advertise for bids for paving Okmulgee Avenue from Sixth Street west to Seventeenth Street, the City limits. It is only fair that if the abutting property owners have a preference as to the kind of paving to be used, their wishes should be consulted.

If you feel an interest in the matter please state on return card attached hereto whether you desire brick, asphalt or bituminous concrete. Also please state the amount of your frontage, detach and mail the card.

Very truly yours,  
GRANT FOREMAN,  
Alderman Third Ward.

~~GRANT FOREMAN,  
MUSKOGEE, OKLAHOMA.~~

Dear Sir:—

On Okmulgee Avenue, between Sixth Street and Seventeenth Street, I own or control 169 feet of frontage.

I prefer that Okmulgee Avenue from Sixth to Seventeenth Street, be paved with The owner agrees with

city of the property owners.  
(signed) E. H. Mangson  
By E. F. Paxson Agent.

17

GRANT FOREMAN,  
MUSKOGEE, OKLAHOMA.

Dear Sir:—

On Okmulgee Avenue, between Sixth Street and  
Seventeenth Street, I own or control 150  
feet of frontage.

I prefer that Okmulgee Avenue from Sixth to Seven-  
teenth Street, be paved with asphalt.

(Signed) R. T. Colter

GRANT FOREMAN,  
MUSKOGEE, OKLAHOMA.

Dear Sir:—

On Okmulgee Avenue, between Sixth Street and  
Seventeenth Street, I own or control 108  
feet of frontage.

I prefer that Okmulgee Avenue from Sixth to Seven-  
teenth Street, be paved with Brick.

(Signed) J. C. Webb

GRANT FOREMAN,  
MUSKOGEE, OKLAHOMA.

Dear Sir:—

On Okmulgee Avenue, between Sixth Street and  
Seventeenth Street, I own or control 75  
feet of frontage.

I prefer that Okmulgee Avenue from Sixth to Seven-  
teenth Street, be paved with asphalt.

(Signed) R. R. Oylive

**NEW MEMBERS**

**IVIA & DON GLENN**            717 Sooner Dr., Tahlequah, OK 74464

**CAROL BATES LAMASCUS**    Rt. 1, Box 535, Checotah, OK 74426

**VIRGINIA LAWSON LONG**    2852 Highway MM, Mtn. Grove, MO  
65711  
Researching: **Zack Wilson**, b. Jefferson, KY  
b. 1814  
**George A. Wilson**, b. Wright  
Co., MO 1841  
**Mary Jane Prock**, b. Wright  
Co., MO 1842  
**William Rufus Prock**,  
b. Monroe Co., TN 1814

**BESSIE SIZEMORE**            P.O. Box 236, Checotah, OK 74426

**MONA WOODWARD**            420 Elmira, #1014, Muskogee, OK  
74403  
Researching: **Woodward**, Arkansas;  
**Wagnon**; **Benge**

~ ~ ~ ~ ~

**AROUND THE TOWN IN MUSKOGEE**

**July 14, 1908 - Muskogee Phoenix**

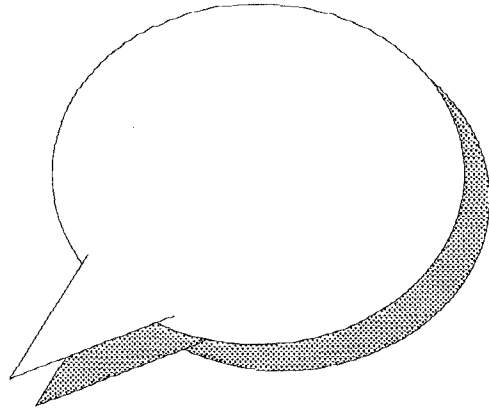
**Marriage Licenses:**

Sam Thompson 23, Ellen Nave 22, Muskogee  
T.L. Moody 24, Sadie Findley 15, Yahola  
Walter A. Green 23, Fisher Parker 23, Muskogee

**Death:** William Bradshaw, 60 years old died at the poor farm at Boynton yesterday of cancer of the stomach. Ten years ago Bradshaw had a wife and a family in Kansas City, but for years he has heard nothing from them.

**Wyeth H. Jordan and J.R. Flenner** have offices in the new Chicago building on Third Street, having moved from their former quarters in the English block.

**“Hey, I’m Researching that  
Surname, too!”**



The results of the Muskogee County Genealogical Society survey have been compiled and reviewed by the Board of Directors for use in future planning. Thanks to everyone who participated!

**The Drawing for the Two Free 1998 Memberships  
is Official and the Winners are ...**

**Dorothy Gray and Geneva Taylor**

**Congratulations!!**

As promised, we’ve collected all the surnames that were provided by our members on their surveys and are including them on the pages that follow. The first set reflects the surnames sorted by surname and the second set reflects the surnames sorted by member name. Perhaps you see a familiar name or geographic location that interests you. If so, turn to the back of the quarterly and look up the name of the member who submitted the surname in our 1997 Membership Directory and then give them a call or send them a letter.

regards,  
1997 Board of Directors  
Muskogee County Genealogical Society

What Surnames Our Members Are Researching - Sorted by Surname

| <u>Member Name</u>        | <u>Surname</u>       | <u>Geographic Location</u>                                                                                 | <u>Time Period</u> |
|---------------------------|----------------------|------------------------------------------------------------------------------------------------------------|--------------------|
| Below                     | Abraham              | Minnesota                                                                                                  | 1860               |
| Leatherman, Floretta      | Allen                | Kentucky; Ireland: Cairns Store-Pulaski County                                                             | 1800-              |
| Leatherman, Floretta      | Allen                | Ireland: Boggs                                                                                             |                    |
| Riding-Ball, Diane        | Ball                 | South Carolina: Abbeville                                                                                  | 1840-1855          |
| Powell, Jerrel and Aldena | Barnes               | Oklahoma; Texas; Missouri                                                                                  | 1840-present       |
| Nickerson, Delores Ogle   | Bates                | Virginia; Georgia                                                                                          | 1774-1843          |
| Penquite, Deone           | Bean                 | Pennsylvania                                                                                               | 1785               |
| Leatherman, Florella      | Beckett              | Arkansas                                                                                                   | 1850               |
| Brooks, B. J.             | Benton               | Missouri; Oklahoma (Indian Territory)                                                                      | 1800               |
| Below                     | Below                | Minnesota                                                                                                  | 1860               |
| Brooks, Linda             | Blackstone           | Oklahoma: Webbers Falls (Indian Territory); Arkansas: Maysville                                            | 1840               |
| Brooks, B. J.             | Brown                | Arkansas; Georgia; South Carolina                                                                          | 1800               |
| Stout, Marilyn            | Burghar(d)t          | Kansas; Russia: Pfeifer                                                                                    | 1891               |
| Nickerson, Delores Ogle   | Burnett              | Virginia; Georgia; Scotland                                                                                | 1778-1856          |
| Simpson, Louise Cook      | Childs               | Massachusetts                                                                                              | 1600-1700          |
| Simpson, Louise Cook      | Clark                | Vermont; North Carolina                                                                                    | 1750               |
| Simpson, Louise Cook      | Cobb                 | Vermont; Kentucky                                                                                          | 1620-1820          |
| Simpson, Louise Cook      | Cook                 | Maryland; Kentucky                                                                                         | 1750-present       |
| Branstetter, Mary         | Cox                  | Oklahoma: Nowata County (Indian Territory)                                                                 | 1870               |
| Simpson, Louise Cook      | Dabbs                | Virginia; Tennessee                                                                                        | 1700+              |
| Penquite, Deone           | Darnell              | Maryland                                                                                                   | 1800-              |
| Simpson, Louise Cook      | Davidson             | West Virginia; Virginia                                                                                    | 1735-present       |
| Brooks, Linda             | Davis                | Georgia: Habersham County                                                                                  | 1800               |
| Perry, Virginia Vann      | Davis                | Oklahoma (Indian Territory); Georgia; Tennessee                                                            | 1800-present       |
| Gray, Dorothy             | Dawson               | England; Tennessee; Oklahoma                                                                               | 1850-1900          |
| Taylor, Geneva Dugger     | Dugger               | Kentucky; Indiana; Kansas; Indian Territory                                                                | 1835               |
| Brooks, B. J.             | Duncan               | Arkansas; Georgia                                                                                          | 1800               |
| Penquite, Deone           | Duncan               | Pennsylvania                                                                                               | 1790               |
| Riding-Ball, Diane        | Durbin               | Maryland: Frederick County                                                                                 | 1700               |
| Lang, Vicki               | Dyer                 | Virginia: Granger County; E. Tennessee; Illinois: Cass County; Kansas: Burden County; Oklahoma: Kay County | 1860               |
| First, Jackie             | Egener               | Tennessee: Lehigh County                                                                                   | 1830 and prior     |
| Brooks, Linda             | England              | Tennessee: Monroe County; North Carolina                                                                   | 1500               |
| Branstetter, Mary         | Farrar               | Massachusetts; Rhode Island; England                                                                       | 1800-present       |
| Branstetter, Mary         | Farrell              | Oklahoma: Nowata County (Indian Territory); Wisconsin; Ireland                                             | 1500               |
| Branstetter, Mary         | Farrow               | Massachusetts; Rhode Island; England                                                                       | 1800-              |
| Penquite, Deone           | Free                 | Maryland                                                                                                   | 1800-              |
| Below                     | Gaddis               | Texas                                                                                                      | 1820               |
| Stiles, Debbie            | Garnett              | Arkansas: Delaplaines; Illinois; Missouri; Oklahoma: Muskogee                                              | 1857               |
| Nickerson, Delores Ogle   | Gatewood             | Virginia                                                                                                   | 1635-1745          |
| Wheeler, Marsha Wyrnick   | Gillis               | Arkansas; Tennessee                                                                                        | 1850-1925          |
| Powell, Jerrel and Aldena | Gray                 | Oklahoma; Texas; Alabama                                                                                   | 1810-present       |
| Hagan, Mickey             | Hail                 | Oklahoma: Muskogee; Missouri: Cooper County                                                                | 1840               |
| Lang, Vicki               | Hart ("Black Harts") | Kansas: Chautauqua; Illinois                                                                               | 1830-1900          |
| Stiles, Debbie            | Haselden             | Texas: Bronfite; Coke County                                                                               | 1880               |
| Leatherman, Florella      | Head                 | Kentucky; Kansas                                                                                           | 1800-              |
| Stiles, Debbie            | Hiler                | Oklahoma: Briar Town, Porum, Checotah                                                                      | 1886-1842          |

What Surnames Our Members Are Researching - Sorted by Surname

| <u>Member Name</u>        | <u>Surname</u> | <u>Geographic Location</u>                                    | <u>Time Period</u> |
|---------------------------|----------------|---------------------------------------------------------------|--------------------|
| Hagan, Mickey             | Hooper         | Oklahoma; Muskogee; North Carolina; Caswell County            | 1800               |
| Simpson, Louise Cook      | Hopkins        | Virginia; Tennessee                                           | 1700+              |
| Taylor, Geneva Dugger     | Hotsenpillar   | Indiana                                                       | 1833               |
| Nickerson, Delores Cagle  | Howard         | Virginia; Georgia; Tennessee                                  | 1735-1780          |
| Wheeler, Marsha Wyrnick   | Hyman          | South Carolina; Piedmont                                      | 1850-1910          |
| Leatherman, Floretta      | Johnson        | Missouri; Oklahoma; Muskogee                                  | 1860-1890          |
| Leatherman, Floretta      | Johnston       | Arkansas                                                      | 1870-1910          |
| Stout, Marilyn            | Kisner         | Kansas; Russia; Pteifer                                       | 1891               |
| Stout, Marilyn            | Kistler        | Kansas; Topeka                                                |                    |
| Lang, Vicki               | Kruse          | Germany; Illinois; Cass County; Kansas; Grey County           | 1860               |
| Lang, Vicki               | Kruse          | Germany; Illinois; Cass County; Kansas; Grey County           | 1700-present       |
| Lang, Vicki               | Lang           | Tennessee; Virginia; Ohio; Washington County; Pennsylvania    | 1800               |
| Leatherman, Floretta      | Leatherman     | Missouri; Mincy; Ohio                                         | 1840-1914          |
| Riding-Ball, Diane        | Logsdon        | Maryland; Frederick County                                    | 1700               |
| Below                     | Lunford        | Texas; New Mexico                                             | 1820               |
| Leatherman, Floretta      | Mannon         | Arkansas                                                      | 1840-              |
| Stiles, Debbie            | Martin         | Texas; Bronte; Coke County                                    | 1880               |
| Perry, Virginia Vann      | McClure        | Oklahoma (Indian Territory); Georgia; Virginia                | 1830-present       |
| Hagan, Mickey             | Mendenhall     | Pennsylvania; Chester County                                  | 1680               |
| Riding-Ball, Diane        | Meshew         | Virginia; Goochland; Oklahoma; Holdenville                    | 1750-1900          |
| Miller, Jack M.           | Miller         | North Carolina; Oklahoma; Muskogee                            | 1785               |
| Gray, Dorothy             | Mitchell       | Ireland; New York; Pennsylvania; Oklahoma                     | 1850-1880          |
| Wheeler, Marsha Wyrnick   | Morris         | Mississippi                                                   | 1850-1900          |
| Leatherman, Floretta      | Neal           | Kentucky; Arkansas; Washington County                         | 1830-              |
| Leatherman, Floretta      | Neel           | Illinois; Matton; Oklahoma; Rogers County                     | 1870-              |
| First, Jackie             | Osborn         | Kentucky; Monroe County                                       | 1870               |
| Taylor, Geneva Dugger     | Owen/Owens     | Virginia; Kentucky; Indiana                                   | 1820               |
| Stiles, Debbie            | Page           | Arkansas; Delaplaines; Illinois; Missouri; Oklahoma; Muskogee | 1857               |
| Miller, Jack M.           | Paul           | North Carolina; Oklahoma; Muskogee                            | 1800-present       |
| Hagan, Mickey             | Perrymore      | Texas; Clarksville (Red River County)                         | 1850               |
| Simpson, Louise Cook      | Pettus         | Virginia; Tennessee                                           | 1700+              |
| Powell, Jerral and Aldena | Pfeifer        | Oklahoma; Kansas; Missouri; New York; Germany                 | 1819-present       |
| Powell, Jerral and Aldena | Powell         | Oklahoma; Missouri; Tennessee; Alabama; North Carolina        | 1810-present       |
| Lang, Vicki               | Preston        | Western Maryland                                              | 1790               |
| Reese, Marilyn            | Reese          | Muskogee                                                      | 1783-present       |
| Leatherman, Floretta      | Reheard        | Missouri; Kansas; Oklahoma                                    | 1790-              |
| First, Jackie             | Reynolds       | Illinois; Green County                                        | 1870               |
| Stiles, Debbie            | Riddle         | Oklahoma; Briar Town; Porum, Checotah                         | 1886-1842          |
| Stiles, Debbie            | Riggs          | Oklahoma; Briar Town, Porum, Checotah                         | 1886-1842          |
| Perry, Virginia Vann      | Robinson       | Oklahoma (Indian Territory); Arkansas; Texas                  | 1830-present       |
| Simpson, Louise Cook      | Rose           | Virginia                                                      | 1700               |
| Gray, Dorothy             | Scott          | England; South Carolina; Georgia; Tennessee; Oklahoma         | 1780-1880          |
| Reese, Marilyn            | Scott          | Oklahoma; Muskogee; Tahlequah; Kentucky; Tennessee            | 1826-present       |
| Brooks, Linda             | Shackelford    | Missouri; Clark County                                        | 1840               |
| Leatherman, Floretta      | Sharpe         | Kentucky                                                      | 1840-              |
| Simpson, Louise Cook      | Simpson        | Kentucky; Missouri; Virginia                                  | 1790+              |

What Surnames Our Members Are Researching - Sorted by Surname

| <u>Member Name</u>      | <u>Surname</u> | <u>Geographic Location</u>                         | <u>Time Period</u> |
|-------------------------|----------------|----------------------------------------------------|--------------------|
| Taylor, Geneva Dugger   | Smith          | Indiana; Missouri; Indian Territory                | 1820               |
| Riding-Ball, Diane      | Sparks         | Virginia; Kentucky County, Creek; Indian Territory | 1740-1890          |
| Miller, Jack M.         | Spaulding      | Virginia; Oklahoma; Muskogee                       | 1750-present       |
| Brooks, B. J.           | Staton         | Missouri; Kentucky                                 | 1800               |
| Reese, Marilyn          | Stout          | South Carolina; Arkansas; Oklahoma                 | 1821-present       |
| Perry, Virginia Vann    | Taylor         | South Carolina; Arkansas                           | 1821-present       |
| Gray, Dorothy           | Thompson       | Oklahoma (Indian Territory); Georgia               | 1800-present       |
| Simpson, Louise Cook    | Thornton       | England; Virginia; Tennessee; Georgia; Oklahoma    | 1780-1997          |
| Perry, Virginia Vann    | Townes         | Virginia; Tennessee                                | 1700+              |
| First, Jackie           | Vann           | Oklahoma (Indian Territory); Georgia; Tennessee    | 1700-present       |
| Taylor, Geneva Dugger   | Varble         | North Carolina; Rowan County; England              | 1741-1750          |
| First, Jackie           | Walker         | Kentucky; Tennessee                                | 1820               |
| Branstetter, Mary       | Walters        | Ohio; Indiana                                      | 1660-              |
| Wheeler, Marisha Wyrick | Webb           | Rhode Island; Missouri; England                    | 1800-1900          |
| Miller, Jack M.         | Wells          | South Carolina; Piedmont; Georgia                  | 1700-present       |
| Simpson, Louise Cook    | Whittenburg    | Virginia; Oklahoma; Muskogee                       | 1700               |
| First, Jackie           | Wilks          | Virginia                                           | 1747               |
| Brooks, Linda           | Wirble         | North Carolina; Rowan County; England              | 1860               |
|                         | Yahola         | Creek Nation                                       |                    |

What Surnames Our Members Are Researching - Sorted by Member Name

| Member Name          | Surname              | Geographic Location                                                                                          | Time Period    |
|----------------------|----------------------|--------------------------------------------------------------------------------------------------------------|----------------|
| Below                | Abraham              | Minnesota                                                                                                    | 1860           |
| Below                | Below                | Minnesota                                                                                                    | 1860           |
| Below                | Gaddis               | Texas                                                                                                        | 1820           |
| Below                | Lunford              | Texas; New Mexico                                                                                            | 1820           |
| Branstetter, Mary    | Cox                  | Oklahoma; Nowata County (Indian Territory)                                                                   | 1870           |
| Branstetter, Mary    | Farrar               | Massachusetts; Rhode Island; England                                                                         | 1500           |
| Branstetter, Mary    | Farrell              | Oklahoma; Nowata County (Indian Territory); Wisconsin; Ireland                                               | 1800-present   |
| Branstetter, Mary    | Farrow               | Massachusetts; Rhode Island; England                                                                         | 1500           |
| Branstetter, Mary    | Webb                 | Rhode Island; Missouri; England                                                                              | 1660-          |
| Brooks, B. J.        | Benton               | Missouri; Oklahoma (Indian Territory)                                                                        | 1800           |
| Brooks, B. J.        | Brown                | Arkansas; Georgia; South Carolina                                                                            | 1800           |
| Brooks, B. J.        | Duncan               | Arkansas; Georgia                                                                                            | 1800           |
| Brooks, B. J.        | Staton               | Missouri; Kentucky                                                                                           | 1800           |
| Brooks, Linda        | Blackstone           | Oklahoma; Webbers Falls (Indian Territory); Arkansas; Maysville                                              | 1840           |
| Brooks, Linda        | Davis                | Georgia; Habersham County                                                                                    | 1840           |
| Brooks, Linda        | England              | Tennessee; Monroe County; North Carolina                                                                     | 1830 and prior |
| Brooks, Linda        | Shackelford          | Missouri; Clark County                                                                                       | 1800           |
| Brooks, Linda        | Yahola               | Creek Nation                                                                                                 | 1840           |
| First Jackie         | Egener               | Pennsylvania; Lehigh County                                                                                  | 1860           |
| First Jackie         | Osborn               | Kentucky; Monroe County                                                                                      | 1860           |
| First Jackie         | Reynolds             | Illinois; Green County                                                                                       | 1870           |
| First Jackie         | Varble               | North Carolina; Rowan County; England                                                                        | 1741-1750      |
| First Jackie         | Walters              | Ohio; Indiana                                                                                                | 1870           |
| First Jackie         | Wirble               | North Carolina; Rowan County; England                                                                        | 1747           |
| Gray, Dorothy        | Dawson               | England; Tennessee; Oklahoma                                                                                 | 1850-1900      |
| Gray, Dorothy        | Mitchell             | Ireland; New York; Pennsylvania; Oklahoma                                                                    | 1850-1880      |
| Gray, Dorothy        | Scott                | England; South Carolina; Georgia; Tennessee; Oklahoma                                                        | 1780-1880      |
| Gray, Dorothy        | Thornton             | England; Virginia; Tennessee; Georgia; Oklahoma                                                              | 1780-1997      |
| Hagan, Mickey        | Hall                 | Oklahoma; Muskogee; Missouri; Cooper County                                                                  | 1840           |
| Hagan, Mickey        | Hooper               | Oklahoma; Muskogee; North Carolina; Caswell County                                                           | 1800           |
| Hagan, Mickey        | Mendenhall           | Pennsylvania; Chester County                                                                                 | 1680           |
| Hagan, Mickey        | Perrymore            | Texas; Clarksville (Red River County)                                                                        | 1850           |
| Lang, Vicki          | Dyer                 | Virginia; Graninger County; E. Tennessee; Illinois; Cass County; Kansas; Burden County; Oklahoma; Kay County | 1830-1900      |
| Lang, Vicki          | Hart ("Black Harts") | Kansas; Chautauqua, Illinois                                                                                 | 1860           |
| Lang, Vicki          | Kruse                | Germany; Illinois; Cass County; Kansas; Grey County                                                          | 1860           |
| Lang, Vicki          | Kruse                | Germany; Illinois; Cass County; Kansas; Grey County                                                          | 1700-present   |
| Lang, Vicki          | Lang                 | Tennessee; Virginia; Ohio; Washington County; Pennsylvania                                                   | 1800           |
| Lang, Vicki          | Preston              | Western Maryland                                                                                             | 1790           |
| Leathernan, Floretta | Allen                | Kentucky; Ireland; Cains Store-Pulaski County                                                                | 1800-          |
| Leathernan, Floretta | Allen                | Ireland; Boggs                                                                                               | 1850           |
| Leathernan, Floretta | Beckett              | Arkansas                                                                                                     | 1800-          |
| Leathernan, Floretta | Head                 | Kentucky; Kansas                                                                                             | 1800-          |
| Leathernan, Floretta | Johnson              | Missouri; Oklahoma; Muskogee                                                                                 | 1860-1890      |
| Leathernan, Floretta | Johnson              | Arkansas                                                                                                     | 1870-1910      |
| Leathernan, Floretta | Leathernan           | Missouri; Mincy; Ohio                                                                                        | 1840-1914      |
| Leathernan, Floretta | Mannon               | Arkansas                                                                                                     | 1840-          |



What Surnames Our Members Are Researching - Sorted by Member Name

| <u>Member Name</u>        | <u>Surname</u> | <u>Geographic Location</u>                             | <u>Time Period</u> |
|---------------------------|----------------|--------------------------------------------------------|--------------------|
| Leatherman, Floretta      | Neal           | Kentucky; Arkansas: Washington County                  | 1830-              |
| Leatherman, Floretta      | Nees           | Illinois: Maton; Oklahoma: Rogers County               | 1870-              |
| Leatherman, Floretta      | Reheard        | Missouri; Kansas; Oklahoma                             | 1790-              |
| Leatherman, Floretta      | Sharpe         | Kentucky                                               | 1840-              |
| Miller, Jack M.           | Miller         | North Carolina; Oklahoma: Muskogee                     | 1785               |
| Miller, Jack M.           | Paul           | North Carolina; Oklahoma: Muskogee                     | 1800-present       |
| Miller, Jack M.           | Spaulding      | Virginia; Oklahoma: Muskogee                           | 1750-present       |
| Nickerson, Debres Ogle    | Whittenburg    | Virginia; Oklahoma: Muskogee                           | 1700-present       |
| Nickerson, Delores Ogle   | Bates          | Virginia; Georgia                                      | 1774-1845          |
| Nickerson, Delores Ogle   | Burnett        | Virginia; Georgia; Scotland                            | 1778-1856          |
| Nickerson, Delores Ogle   | Gatewood       | Virginia                                               | 1635-1745          |
| Nickerson, Delores Ogle   | Howard         | Virginia; Georgia; Tennessee                           | 1735-1780          |
| Penquite, Deone           | Bean           | Pennsylvania                                           | 1785               |
| Penquite, Deone           | Darnell        | Maryland                                               | 1800-              |
| Penquite, Deone           | Duncan         | Pennsylvania                                           | 1790               |
| Penquite, Deone           | Free           | Maryland                                               | 1800-              |
| Perry, Virginia Vann      | Davis          | Oklahoma (Indian Territory); Georgia; Tennessee        | 1800-present       |
| Perry, Virginia Vann      | McClure        | Oklahoma (Indian Territory); Georgia; Virginia         | 1830-present       |
| Perry, Virginia Vann      | Robinson       | Oklahoma (Indian Territory); Arkansas; Texas           | 1830-present       |
| Perry, Virginia Vann      | Thompson       | Oklahoma (Indian Territory); Georgia                   | 1800-present       |
| Perry, Virginia Vann      | Vann           | Oklahoma (Indian Territory); Georgia; Tennessee        | 1700-present       |
| Powell, Jerrel and Aldena | Barnes         | Oklahoma; Texas; Missouri                              | 1840-present       |
| Powell, Jerrel and Aldena | Gray           | Oklahoma; Texas; Alabama                               | 1810-present       |
| Powell, Jerrel and Aldena | Pfeifer        | Oklahoma; Kansas; Missouri; New York; Germany          | 1819-present       |
| Powell, Jerrel and Aldena | Powell         | Oklahoma; Missouri; Tennessee; Alabama; North Carolina | 1810-present       |
| Reese, Marilyn            | Reese          | Muskogee                                               | 1783-present       |
| Reese, Marilyn            | Scott          | Oklahoma: Muskogee, Tahlequah; Kentucky; Tennessee     | 1826-present       |
| Reese, Marilyn            | Stout          | South Carolina; Arkansas; Oklahoma                     | 1821-present       |
| Reese, Marilyn            | Taylor         | South Carolina; Arkansas                               | 1821-present       |
| Riding-Ball, Diane        | Ball           | South Carolina: Abbeville                              | 1840-1855          |
| Riding-Ball, Diane        | Durbin         | Maryland: Frederick County                             | 1700               |
| Riding-Ball, Diane        | Logsdon        | Maryland: Frederick County                             | 1700               |
| Riding-Ball, Diane        | Meshew         | Virginia: Goochland; Oklahoma: Holdenville             | 1750-1900          |
| Riding-Ball, Diane        | Sparks         | Virginia: Kentucky County; Creek: Indian Territory     | 1740-1890          |
| Simpson, Louise Cook      | Childs         | Massachusetts                                          | 1600-1700          |
| Simpson, Louise Cook      | Clark          | Vermont; North Carolina                                | 1750               |
| Simpson, Louise Cook      | Cobb           | Vermont; Kentucky                                      | 1620-1820          |
| Simpson, Louise Cook      | Cook           | Maryland; Kentucky                                     | 1750-present       |
| Simpson, Louise Cook      | Dabbs          | Virginia; Tennessee                                    | 1700+              |
| Simpson, Louise Cook      | Davidson       | West Virginia; Virginia                                | 1735-present       |
| Simpson, Louise Cook      | Hopkins        | Virginia; Tennessee                                    | 1700+              |
| Simpson, Louise Cook      | Pettus         | Virginia; Tennessee                                    | 1700+              |
| Simpson, Louise Cook      | Rose           | Virginia                                               | 1700               |
| Simpson, Louise Cook      | Simpson        | Kentucky; Missouri; Virginia                           | 1790+              |
| Simpson, Louise Cook      | Townes         | Virginia; Tennessee                                    | 1700+              |
| Simpson, Louise Cook      | Wilks          | Virginia                                               | 1700               |

What Surnames Our Members Are Researching - Sorted by Member Name

| <u>Member Name</u>     | <u>Surname</u> | <u>Geographic Location</u>                                    | <u>Time Period</u> |
|------------------------|----------------|---------------------------------------------------------------|--------------------|
| Stiles, Debbie         | Garnett        | Arkansas: Delaplaines; Illinois: Missouri; Oklahoma: Muskogee | 1857               |
| Stiles, Debbie         | Haselden       | Texas: Bronte; Coke County                                    | 1880               |
| Stiles, Debbie         | Hiler          | Oklahoma: Briar Town, Porum, Checotah                         | 1886-1842          |
| Stiles, Debbie         | Martin         | Texas: Bronte; Coke County                                    | 1880               |
| Stiles, Debbie         | Page           | Arkansas: Delaplaines; Illinois: Missouri; Oklahoma: Muskogee | 1857               |
| Stiles, Debbie         | Riddle         | Oklahoma: Briar Town, Porum, Checotah                         | 1886-1842          |
| Stiles, Debbie         | Riggs          | Oklahoma: Briar Town, Porum, Checotah                         | 1886-1842          |
| Stout, Marilyn         | Burghard(t)    | Kansas; Russia: Pfeifer                                       | 1891               |
| Stout, Marilyn         | Kisner         | Kansas; Russia: Pfeifer                                       | 1891               |
| Stout, Marilyn         | Kistler        | Kansas: Topeka                                                | 1891               |
| Taylor, Geneva Dugger  | Dugger         | Kentucky; Indiana; Kansas; Indian Territory                   | 1835               |
| Taylor, Geneva Dugger  | Holsenpillar   | Indiana                                                       | 1833               |
| Taylor, Geneva Dugger  | Owen/Owens     | Virginia; Kentucky; Indiana                                   | 1833               |
| Taylor, Geneva Dugger  | Smith          | Indiana, Missouri; Indian Territory                           | 1820               |
| Taylor, Geneva Dugger  | Walker         | Kentucky; Tennessee                                           | 1820               |
| Wheeler, Marsha Wyrick | Gillis         | Arkansas; Tennessee                                           | 1820               |
| Wheeler, Marsha Wyrick | Hyman          | South Carolina; Piedmont                                      | 1850-1925          |
| Wheeler, Marsha Wyrick | Morris         | Mississippi                                                   | 1850-1910          |
| Wheeler, Marsha Wyrick | Wells          | South Carolina; Piedmont; Georgia                             | 1850-1900          |
| Wheeler, Marsha Wyrick | Wells          | South Carolina; Piedmont; Georgia                             | 1800-1900          |

**MUSKOGEE COUNTY GENEALOGICAL SOCIETY  
MEMBERSHIP LIST  
1997**

| <u>NAME</u>                 | <u>ADDRESS</u>         | <u>CITY, STATE ,ZIP</u>    | <u>PHONE</u> |
|-----------------------------|------------------------|----------------------------|--------------|
| Arkansas Hist. Comm.        | One Capitol Mall       | Little Rock, AR 72201      | 299-5107     |
| Ball, Diane Riding          | 7339 N. Jackson        | Fresno, CA 93720           | -----        |
| Bell, Fern                  | 210 S. 33rd. #905      | Muskogee, OK 74401         | 687-4115     |
| Benson, Jimmie D. & Loretta | 2608 Williams Ave.     | Muskogee, OK 74401         | 682-6156     |
| Betow, Paul                 | 3709 Canterbury        | Muskogee, OK 74403         | 687-6726     |
| Black, Margaret             | 907 Dbl. Churches Rd.  | Columbus, GA 31904         | 327-1858     |
| Blundell, Stacey            | 4630 E. 113th St.      | Muskogee, OK 74401         | 989-5559     |
| Boggs, Lulu                 | 136 Rodman Circle      | Muskogee, OK 74403         | 682-0359     |
| Boulware, Suzanne           | 12461 E. 36th          | Tulsa, OK 74146            | 663-5431     |
| Bradshaw, Betty             | Rt. 1, Box 260         | Oktaha, OK 74450           | 683-5035     |
| Branstetter, Mary           | 1509 1/2 S. 5th St.    | Muskogee, OK 74401         | 683-1307     |
| Branum, Ann                 | 1111 N. 2000 #22       | Farr West, UT 84404        | -----        |
| Brooks, B.J.                | 1106 Poplar Ave.       | Ft. Gibson, OK 74434       | 478-2338     |
| Brooks, Linda               | 1511 Irene Lane        | Ft. Gibson, OK 74434       | 478-2338     |
| Byrd, Julia                 | P.O. Box 28            | Porum, OK 74455            | -----        |
| Downing, Mary               | 2901 N. 11th W.        | Muskogee, OK 74401         | 682-7459     |
| Dye, Barbara                | 1492 Bayou Bend Lane   | Ft. Gibson, OK 74434       | 478-4774     |
| EBSCO, Ind.Inc.             | P.O. Box 1943          | Birmingham, AL 35201       | -----        |
| First, Jackie               | Route 1, Box 902       | Checotah, OK 74426         | -----        |
| Flood, Evelyn               | 370 N. Jacktone Rd.    | Stockton, CA 95215         | -----        |
| Glenn, Don & Ivia           | 717 Sooner Dr.         | Tahlequah, OK 74464        | 456-5264     |
| Gormley, Myra               | 5011 70 Ave Ct. W.     | University Place, WA 98467 | 2292-----    |
| Gray, Dorothy               | P.O. Box 245           | Beaver, OK 73932           | 825-3676     |
| Green, Marshall             | 4110 S. Robb           | Muskogee, OK 74401         | 682-7102     |
| Hagan, Pete & Mickey        | P.O. Box 1342          | Muskogee, OK 74402         | 478-3807     |
| Harris, Betty               | 1211 Live Oak          | Muskogee, OK 74402         | 682-4710     |
| Higgs, Lloyd & Mary E.      | Route 1, Box 442       | Pryor, OK 74361            | 825-1401     |
| James, Rosa Lee             | 3722 Hrris Road        | Muskogee, OK 74403         | 682-2082     |
| Jeffries, Eddie             | 1017 Horn Street       | Muskogee, OK 74403         | 682-6886     |
| Jones, Diane                | 310 Edmond             | Muskogee, OK 74403         | -----        |
| Jones, Margie L.            | 1324 Helmsman Way      | Sacramento, CA 95833       | -----        |
| Jones, Silas E.             | 223 Grandview Blvd.    | Muskogee, OK 74403         | 687-4778     |
| Kerr, Frank                 | 1301 Horn Street       | Muskogee, OK 74403         | 683-0001     |
| Kite, Mrs. J.W.             | 3109 Brookhollow Rd.   | Okla City, OK 73120        | 751-5925     |
| Lamascus, Carol Ann         | Rt. 1, Box 535         | Checotah, OK 74426         | 473-2484     |
| Lang, Vicki                 | P.O. Box 1433          | Muskogee, OK 74402         | 683-4552     |
| Large, Betty B.             | 211 S. "D" St.         | Muskogee, OK 74403         | 687-5203     |
| Lester, Gary W.             | P.O. Box 134           | Braggs, OK 74423           | 487-5834     |
| Long, Clara                 | P.O. Box 78808         | Bakersfield, CA 93383      | -----        |
| Long, Virginia              | 2852 HWY MM            | Mtn. Grove, MO 65711       | 926-3455     |
| Mansker, Bill G.            | 1401 S. Virginia       | Muskogee, OK 74403         | 687-3558     |
| Miller, Jack & Mona         | 1809 S.W. Arbor Dr.    | Bartlesville, OK 74066     | -----        |
| Miller, Pat                 | 2708 Dayton            | Muskogee, OK 74403         | 683-4819     |
| Myers, Mary                 | 505 Pecan Ridge Rd.    | Ft. Gibson, OK 74434       | 687-3314     |
| Nelson, Elizabeth           | P.O. Box 664           | Hailey ID 83333            | -----        |
| Nickerson, Delores          | 600 Dayton             | Muskogee, OK 74403         | 682-0216     |
| Orange Co. Gen. Society     | 7111 Talbert/o H.B.Li. | Huntington B. CA 92648     | -----        |
| Penquite, Wait & Deone      | 3509 Irving            | Muskogee, OK 74403         | 683-4894     |
| Perry, Virginia             | 315 Edmond             | Muskogee, OK 74403         | 687-8531     |



1913 BASKETBALL TEAM OF PORUM HIGHSCHOOL

Lois Reynolds, now Mrs. Mitchell, wife of the Cashier of the Okemah Bank, Okemah, Oklahoma.

Isabel Higgins, now Mrs. Cole, who for the past two years has been superintendent of the Briartown Public School and who makes her home in Stigler.

Miss Eulalia Rosenbaum, recently discharged from service as an army nurse and who is now located in Muskogee.

Myrtle Marshall, now Mrs. Jack McLellan who has two fine babies and lives in Okmulgee.

Florence Farley, now Mrs. Frank Preston, the only member of the team who still lives in Porum.

Dewey McLemore who lives at Everton, Missouri. Mrs. McLemore was an awfully good guard we remember.

(Picture of the team did not copy well)

NUPTIALS

Henry Rattler and Miss Lucy Fowler were united in marriage at Muskogee last Tuesday afternoon. This marriage was the culmination of a courtship extending over a period of more than a year. The groom is in the ice business here and bride has for over a year worked as operator for the Porum Telephone Company. The Journal joins the many friends in wishing them happiness, prosperity and the rest of the good things of life.

MEN BADLY BURNED

While threshing for Sammie Dunning last Monday, the crown sheet on Ross Smith's thresher blew off and Gabe Smith, engineer, and Grant Smith, water hauler, were both badly burned about the face, arms and hands. Dr. J.H. Plunkett gave the men medical attention and they are getting along nicely.

### PORUM BUSINESS MEN

The Sanitary Meat Market owned by Stanton Warwick and Hugh Shoemaker Jr. is everything that its name implies.

The Porum Lumber company managed by H.P. Alliger does the town's and community's business.

Tucker's Barber shop gives one and up to the minute shave and a stylish hair cut.

George Neil has the most up to date dry goods in town. Mr. Neil also handles groceries.

The Ingram Trading Company has been a fixture in Porum for so many years, but is not necessary to tell you what they have. You already know. They do the business.

Hall and Plunkett does the biggest insurance business in the south end of Muskogee County.

The Coody Trading Company, headquarters for farm supplies has a full line of general merchandise and they buy "gobs" of eggs and poultry.

Joe T. Tone runs the best cleaning and pressing shop around here anywhere. He has a small line of dry goods too.

A.M. Camp handles the biggest line of groceries in Porum. He is also a live stock shipper. Mr. Camp has recently installed a big line of foot wear.

Emanuel's Bargain Store handles the goods and "Dutch" is a real salesman.

The Porum Cafe owned and operated by John McLaughlin is the place where all who want their food well cooked and served go to eat.

Ed Taylor handles a special line of Hardware and Implements. He does his share of the business.

The Child's Drug Store has one of the biggest stocks of goods in Muskogee County. They handle the Rexall and Nyal line.

The Porum Drug Co."The store of quality" are always busy. They have installed a Sanitary Fountain System.

The American State Bank where safe and sound banking is carried on is one of the most progressive institutions in the state.

Finklea Bros. have a big line of hardware and implements and they sell it right.

Tom Campbell beside selling lots of general merchandise pays the farmer the highest cash price for farm produce.

The Porum Garage owned by Elmer Plunket does a big business both in livery service and repair work. Forrest Johnson and Frank Nicholson, both competent mechanics, work for Plunket.

TAXPAYERS OF PORUM TOWNSHIP

1916

Muskogee County, OK

Adamson, H. L., Porum  
Aldridge, W. T., Porum  
Anderson, Victor, Porum  
Arnett, L., Porum  
Bailey, B. L., Porum  
Bailey, J. C., Porum  
Bailey, J. S., Porum  
Barnes C., Briartown  
Barnes, C. B., Briartown  
Barnes Ellis, Briartown  
Barnes Hiram, Briartown  
Barnes Hiram, Porum  
Barnes, I., Briartown  
Barnes, John, Briartown  
Barnes, Oscar, Porum  
Barnes, Oscar, Briartown  
Barnes, Winona, Porum  
Barrett, E. C., Porum  
Barrow, Daniel, Porum  
Battles, W. A., Porum  
Benton, E. B., Briartown  
Billue, G. E., Porum  
Blackstone, Gracie, Porum  
Blackstone, H. A., Porum  
Blackstone, Nora  
Blair, M. W., Porum  
Blankenship, R. F., Porum  
Blankenship & McLellan, Porum  
Bolund, Ross, Porum  
Boothe, J. W., Porum  
Brandrick, J. R., Briartown  
Brashears, Elbert, Porum  
Brashears, E. V., Porum  
Braxton, J. L., Porum  
Breshears, E. V., Briartown  
Breshears, G. M., Briartown  
Briley, I. C., Porum  
Briley, John, Porum  
Briley, Martin, Briartown  
Brooke, R. P., Porum  
Brown, J. D., Porum  
Brown, Monroe, Porum  
Brown, R. D., Porum  
Bryant, Charles, Porum  
Burk, J. R., Porum  
Burke, W. L., Porum  
Burks, W. C., Porum  
Burleson, J. E., Porum  
Burleson, J. H., Porum  
Burnett, O. H., Porum  
Burr, Aaron, Porum  
Bush, W. M., Porum  
Byrd, J. E., Porum

Bryd, L. R., Porum  
Byrd, W. L., Porum  
Byrd, W. N., Porum  
Cain, George W., Porum  
Callison, A. B., Porum  
Callison, H. E., Porum  
Camp, A. M., Porum  
Camp, J. R., Porum  
Campbell, H. W., Briartown  
Campbell, John, Porum  
Campbell, Willie, Briartown  
Campbell, W. H., Briartown  
Cash, J. M., Briartown  
Cash, J. M., Porum  
Casinger, J. T., Porum  
Cavender, S. C., Porum  
Chambers, J. C., Porum  
Childers, J. A., Porum  
Chrisenberry, F. S., Porum  
Clayton, George, Porum  
Cole, A. E., Porum  
Cole, J. B., Porum  
Cole, J. B. & Mathews, I. B., Porum  
Coleman, Samuel G., Porum  
Collins, Frank, Briartown  
Conover, G. W., Porum  
Coodey, D. R., Porum  
Cook, H. C., Porum  
Cooper, J. T., Briartown  
Cottingham, C. C., Porum  
Coursey, C. W., Porum  
Cramp, Tilden, Porum  
Cross, J. R., Porum  
Dandridge, J. W., Porum  
Davidson, C. H., Porum  
Davis, Elias, E., Porum  
Davis, E. D., Porum  
Davis, H. H., Porum  
Davis, Jeter, Porum  
Davis, Marion, Porum  
Davis,  
Davis, S. W., Porum  
Delaney, Josie, Porum  
Denton, P. D., Porum  
Didway, H. C.  
Doty, J. R., Porum  
Dowdy, R. C., Porum  
Dowdy, Sarah, Mrs., Porum  
Wowdy, T. J., Porum  
Driskell, A. B., Porum  
Driskell, J. H., Porum  
Driskell, S. B., Porum  
Dunaway, R. E., Porum  
Dunn, Ida, Porum  
Edwards, Lee, Porum  
Eichling, O. F., Porum  
Emberson, J. S., Briartown

Epperson, Jake, Briartown  
Eyer, George, Porum  
Farrar, G. W., Porum  
Farrile, L. D., Porum  
Finklea, R. A., Porum  
Fisher, King, Porum  
Fisher, W. M., Porum  
Foley, Patrick & Sons, Porum  
Fool, William, Porum  
Fox, John, Briartown  
Fudge, M. L., Porum  
Gann, W. S., Porum  
Gatlin, G. F., Porum  
Gibson, J. B., Porum  
Gibson, J. T., Porum  
Gillies, E. S., Porum  
Goodman, A. H., Briartown  
Goodner, T. L., Porum  
Goodner, W. F., Porum  
Graham, B. W., Porum  
Graves, E. L., Porum  
Green, W. A., Porum  
Grover, Edna V., Porum  
Gulledge, George W., Briartown  
Hall, A. B., Porum  
Hall, H. A., Briartown  
Hall, J. C., Briartown  
Hallford, M. M., Mrs., Porum  
Hardgrave, G. W., Porum  
Harmor, A. T., Briartown  
Harner, Della, Briartown  
Harper, J. L., Porum  
Harper, L. L., Porum  
Harriman, J. H., Porum  
Harris, Grant, Porum  
Hatfield, J. R., Porum  
Havens, J. H., Porum  
Hawkins, J. M., Porum  
Haygood, Mary, Mrs., Briartown  
Hawgood, J. E., Porum  
Hearn, Jesse, Porum  
Hearron, Della, Porum  
Hearron, J. L., Briartown  
Hedman, Olof, Porum  
Helton, C. W., Porum  
Helton, Earl, Porum  
Helton, Ora, Porum  
Hensley, H. S., Porum  
Hensley, J. E., Porum  
Hensley, W. M., Porum  
Herriman, W. D., Porum  
Herron, J. L., Briartown  
Herchelman, D., Porum  
Hicks, D. A., Porum  
Hicks, George W., Porum  
Hicks, R. J., Porum  
Hillard, B. F., Porum

Hilton, J. S., Briartown  
Hilton, Redmon, Briartown  
Holt, J. A., Porum  
Hoos, George, Briartown  
Hoose, R. C., Porum  
House, Andrew, Briartown  
Hughes, W. H., Porum  
Hunt, Benjamin, Porum  
Hurt, Clay, Porum  
Huse, W. H., Briartown  
Ingram, A. T., Porum  
Israel, Margaret, Miss, Porum  
Israel, Walter, Porum  
Jackson, Dink, Porum  
Jackson, Dow, Porum  
Jackson, G. W., Porum  
Jackson, James, Porum  
Jackson, J. E., Porum  
Jackson, M. P., Porum  
Jackson, T. M., Porum  
James, Mary E., Briartown  
Jarnagan, E. L., Porum  
Jimison, A. F., Porum  
Jimison, J. M., Porum  
Jimison, J. W., Porum  
Johnson, M. C., Porum  
Johnson, Thomas, Porum  
Jones, Ella, Porum  
Jones, W. H., Porum  
Julian, Robert W., Porum  
Kash, Nancy E., Porum  
Keith, Beulah B., Porum  
Keith, F. W., Porum  
Keith, J. S., Porum  
Keith, Paul, Porum  
Keith, William P., Porum  
Kellam, J. W., Porum  
Kenyon, George A., Porum  
Ketterman, B. C., Porum  
Kirk, O. W., Porum  
Lahr, Charles, Porum  
Lambert, George, Porum  
Lambley, John W., Porum  
Largent, J. E., Porum  
Lasiter, J. F., Porum  
Law, T. H., Porum  
Lawhorn, H., Porum  
Lawson, C. R., Briartown  
Lawson, John, Porum  
Lee, C. W., Porum  
Lewis, Andrew, J., Porum  
Lewis, D. S., Porum  
Lewis, Edward, Porum  
Lewis, J. L., Porum  
Lewis, J. N., Porum  
Longley, W. H., Briartown  
Loudermilk, J. A., Briartown



Loudermilk, W. H., Briartown  
Lowe, M. F., Porum  
Lowery, D. J., Porum  
Lowery, T., Briartown  
Lowrimore, Bessie, Porum  
Lowrimore, J. Arley, Porum  
Lowrimore, W. H., Porum  
Lowry, R. J., Porum  
Lucan, J. A., Briartown  
Lundin, Alfred, Porum  
McClure, Alice, Mrs., Porum  
McClure, C. J., Porum  
McClure, Douglas, Porum  
McClure, Edwin, Porum  
McClure, Francis, Porum  
McClure, F. M., Porum  
McClure, James, Briartown  
McClure, Kate, Porum  
McClure, S. J., Porum  
McClure, W. E., Briartown  
McDaniel, Thomas, Porum  
McDonald, Adam, Porum  
McGinnis, G. W., Porum  
McGlamery, D. A., Porum  
McGlamery, Felix, Porum  
McKee, William R., Porum  
McLaughlin, J. C., Porum  
McLellan, Jack, Porum  
McLemore, R. F., Porum  
McLemore, W. Y., Porum  
Mabrey, J. P., Porum  
Mabry, Ethel M., Porum  
Macon, J. E., Porum  
Manley, J. R., Briartown  
Martin, A. L., Porum  
Mathews, Thomas H., Porum  
Mathews, T. B., Porum  
Maxey, Ina L., Porum  
Maxwell, Daisy, Mrs., Porum  
Meeks, Polly, Porum  
Mendenhall, J. W., Porum  
Miks, H. C., Porum  
Miller, J. W., Porum  
Miller, L. S., Porum  
Minkes, J. H., Porum  
Moles, J. T., Porum  
Mooney, Charles, Porum  
Moore, E., Porum  
Moore, J. N., Briartown  
Morgan, Felix D., Briartown  
Mullen, A. H., Briartown  
Myers, D. C., Porum  
Neal, W. W., Briartown  
Nelson, Erah, Porum  
Nelson, Ethel, Porum  
Nelson, Jesse, Porum  
Nelson, Marion W., Porum

Nelson, Watie Z., Porum  
Nelson, W. W., Porum  
Nickell, C. H., Porum  
Nickell, P. A., Porum  
Nichols, N. C., Porum  
Nicholson, G. W., Porum  
Norman, R. M., Porum  
Odom, Frank, Porum  
O'Neal, J. B., Porum  
O'Neal, Sidney F., Porum  
O'Reilly, Mary E., Porum  
Oslin, E. F., Porum  
Parker, John, Porum  
Patty, W. T., Porum  
Pearle, O. E., Porum  
Peters, J. N., Briartown  
Pheasant, George, Porum  
Phillips, Charles, Porum  
Phillips, Delia M., Porum  
Phillips, Elvie, Porum  
Phillips, Julius, Porum  
Phillips, Lizzie, Porum  
Phillips, Walter, Porum  
Phillips, W. L., Porum  
Pickering, H. M., Porum  
Pitts, W. H., Porum  
Plunkett, Arthur J., Porum  
Pound, Jessie, Porum  
Pound, J. R., Porum  
Pryor, J. L., Porum  
Pryor, W. N., Porum  
Raimer, W. T., Porum  
Rather, Rider, Porum  
Reding, J. H., Porum  
Reeves, W. T., Porum  
Reinel, M. J., Porum  
Reynolds, C. L., Porum  
Roberts, W. E., Porum  
Robertson, S. R., Porum  
Robertson, Lucy, Porum  
Robinson, Nancy, Porum  
Robinson, Rebia, Porum  
Robinson, Samuel, Briartown  
Ross, Alvah, Porum  
Ross, Alvin, Porum  
Ross, F. C., Porum  
Rowsey, Sallie F., Porum  
Russell, Christopher, Porum  
Samples, W. M., Porum  
Sanders, G. C., Briartown  
Sanders, G. W., Porum  
Sanders, J. S., Briartown  
Sarrels, J. R., Briartown  
Sartin, H. E., Porum  
Sartin, J. O., Porum  
Scott, George, Briartown  
Sellers, J. C., Porum

Sexton, T. M., Porum  
 Sharpshire, J. J., Briartown  
 Shell, Jesse, Porum  
 Shelton, J. P., Briartown  
 Shoemake, H. A., Porum  
 Shoemake, James, Porum  
 Shoemake, Roxie L., Porum  
 Sisk, W. C., Porum  
 Smith, A. O., Briartown  
 Smith, E. F., Mrs., Porum  
 Smith, G. A., Porum  
 Smith, H. F., Porum  
 Smith, J. B., Porum  
 Smith, J. H. P., Porum  
 Stanfield, R. L., Briartown  
 Stanford, G. D., Briartown  
 Stanton, J. W., Porum  
 Starr, Bird, Briartown  
 Starr, Cooper, Porum  
 Starr, C. W., Porum  
 Starr, Ellis, Porum  
 Starr, Ella, Porum  
 Starr, Fanny C., Porum  
 Starr, Henry, Porum  
 Starr, Jack, Porum  
 Starr, Kate, Briartown  
 Starr, Mosey, Miss, Briartown  
 Starr, Richard, Porum  
 Starr, R. D., Porum  
 Starr, Samuel, Briartown  
 Starr, Thomas, Briartown  
 Starr, Tuxie, Briartown  
 Steine, Rudolph, Porum  
 Stephens, A. E., Porum  
 Stephens, Burrell, Porum  
 Stephens, B. S., Porum  
 Stidham, Cooly, Porum  
 Stidham, John, Porum  
 Stone, W. P., Porum  
 Stout, C. H., Porum  
 Stout, G. W., Porum  
 Stout, J. B., Porum  
 Stout, R. L., Porum  
 Stricklin, W. M., Porum  
 Sunday, George, Porum  
 Swagerty, A. C., Porum  
 Swofford, J. W., Porum  
 Taylor, Edward, Porum  
 Taylor, Z. J., Porum  
 Terry, F., Porum  
 Todd, W. E., Porum  
 Totten, T. S., Porum  
 Troutham, J. B., Porum  
 Tully, J. D., Porum  
 Tully, M. C., Porum  
 Turpin, J. K., Porum  
 Twig, W. H., Porum

Tyree, N. T., Porum  
 Ueckar, W. T., Briartown  
 Upchurch, P. J., Porum  
 Van Ansdell, L. W., Porum  
 Van Meter, J. V., Porum  
 Vann, Katie, Porum  
 Vann, William, Briartown  
 Vinsant, A. J., Porum  
 Vinzant, J. S., Porum  
 Vowell, C. W., Porum  
 Walker, R. J., Porum  
 Walker, W. G., Porum  
 Ward, J. H., Porum  
 Ward, W. M., Porum  
 Ward, W. W., Porum  
 Waters, B. W., Porum  
 Watson, E. L., Porum  
 Watson, W. E., Porum  
 Watts, C., Porum  
 Weaver, George W., Porum  
 Weaver, J. H., Porum  
 Weaver, T. B., Porum  
 West, Ellis C., Porum  
 West, E. C., Porum  
 West, John B., Porum  
 West, John C., Porum  
 West, Richard, Porum  
 West, R. F., Briartown  
 West, Tecumseh, Porum  
 West, William C., Porum  
 Wheeler, J. E., Porum  
 Whitman, W. W., Porum  
 Wiedower, J. C., Porum  
 Wilkerson, J. W., Porum  
 Willis, J. A., Porum  
 Willis, Lee, Porum  
 Woodard, David, Porum  
 Woodruff, C. W., Briartown  
 Woods, W. O., Porum  
 Work, Ralph, Porum  
 Wright, W. W., Porum

---

Taken from the Phoenix Muskogee City and County  
 Directory - 1916

Transcribed by Mary McLain Downing

**This concludes the listing of  
 Muskogee County Taxpayers.**

????? QUERIES ?????

Seeking information on Sam ROGERS, born abt 1872-1879, MO/AL. Parents names unknown. Sam married Ida Mae BORDERS born 1890, AK/AL. Ida Border ROGERS died Dec 1918 at Tahlequah, OK, buried at Tahlequah Cemetery Ida's parents Andrew Jackson (Jack or A.J.) BORDERS and Nancy KING. Sam and Ida's children were Robert b. (?) and Lucille b. abt. 1905.

(1920 Census, OK - Pontotock Co., Allen Twp.)

Lucille ROGERS age 5, living with Charlie & Isabel Gray. Isabel is sister to Ida Borders ROGERS. Where is Sam & Robert ROGERS in 1920? Where did Sam and Robert ROGERS die, place and date? Any descendants of Sam and Ida BORDER ROGERS? I will be glad to hear from anyone with this family.

I am the granddaughter of James Mitchell ROGERS, b. abt. 1875, MO. James and Sam ROGERS were brothers. Their parents died when the children were very small in Missouri.

James ROGERS and Andrew J. BORDERS are in Baxter Co., AR in the 1900 census. The BORDERS & ROGERS stay together. Andrew (Jack or A.J.) BORDERS died 1919, where?

Jack BORDERS lived in Checotah, OK 1905. Need any information of Lucille ROGERS and Robert ROGERS.

Clara Rogers Long, P.O. Box 78808, Bakersfield, CA 933383

^^^^^^^^^^^^^^^^^^^^^^^^^^^^^^^^^^^^^^^^

Zacheus Charles "Charlie" WILSON born abt. 1857, Wright Co., MO, son of Zack and Eliza (ADAMSON) WILSON. Charles WILSON died 8 April 1943, Hulbert, OK, buried I.O.O.F. Cemetery, Hulbert. I am told that Charlie WILSON'S family drowned while trying to cross a rain-swollen river, somewhere in the Wagoner Oklahoma area. Only Charlie and a daughter, Lily or Lela Belle were saved from drowning. Has anyone heard this story? I need info on family. My great grandfather, George Alexander WILSON was a brother of Charlie.

Virginia Lawson Long, 2852 Highway MM, Mtn. Grove, MO 65711  
(417) 926-3455

# West-Central Kentucky Family Research Association

## Ancestor Chart

Name of Compiler Virginia Long  
 Address 2852 Hwy MM  
 City, State Mtn Grove, MO 65711  
 Date 3 May 1997

Person No. 1 on this chart is the same person as No. \_\_\_\_\_ on chart No. \_\_\_\_\_

Chart No. \_\_\_\_\_

FF  
 Date of Birth  
 Place of Birth  
 Date of Marriage  
 Date of Death  
 Place of Death

OWENSBORO, KENTUCKY 42302

P.O. BOX 1932

RETURN TO: WCK:FRA

4 Noah Lawson  
(Father of No. 2)  
 b. 19 Jan 1879  
 p.b. Rayborn, Wright Co MO  
 m. 7 Oct 1899  
 d. 19 May 1944  
 p.d. Wright Co MO

2 Ernest Andrew Lawson  
(Father of No. 1)  
 b. 27 Feb 1910  
 p.b. Dawson, Wright Co MO  
 m. 3 Mar 1935  
 d. 13 Oct 1992  
 p.d. Hartville MO

5 Nancy Rosella Wilson  
(Mother of No. 2)  
 b. 25 Dec 1879  
 p.b. Sharp Co AR  
 d. 7 Oct 1965  
 p.d. Shelbyville IN

1 Frances Virginia Lawson  
 b. 10 Apr 1942  
 p.b. Dawson, Wright Co MO  
 m. 1 Jan 1973  
 d.  
 p.d.

6 Samuel H Scarborough  
(Father of No. 3)  
 b. 31 Aug 1884  
 p.b. Talmadge, Wright Co MO  
 m. 1906  
 d. 2 Nov 1962  
 p.d. Wright Co MO

3 Edith Geneva Scarborough  
(Mother of No. 1)  
 b. 10 Mar 1916  
 p.b. Talmadge, Wright Co MO  
 d. 4 Oct 1990  
 p.d. Greene Co MO

7 Ada Frances Robinett  
(Mother of No. 3)  
 b. 7 Sept 1883  
 p.b. Wright Co MO  
 d. Jul 1971  
 p.d. Greene Co MO

Vernon Lee Long  
(Spouse of No. 1)  
 b. 23 May 1940 d.  
 p.b. Wright Co MO p.d.

8 William Robert Lawson  
(Father of No. 4)  
 b. 25 May 1852  
 p.b. McMinn Co TN  
 m. Ca 1876  
 d. 5 Aug 1924  
 p.d. Mtn Grove, MO

9 Mary Jane Clark  
(Mother of No. 4)  
 b. 30 Dec 1859  
 p.b. Johnson Co? AR  
 d. 17 Mar 1886  
 p.d. Rayborn, Wright Co MO

10 George Alexander Wilson  
(Father of No. 5)

b. Mar 1841  
 p.b. Webster Co MO  
 m. 10 Oct 1859  
 d. 16 Feb 1928  
 p.d. Wagoner OK

11 Mary Jane Prock  
(Mother of No. 5)  
 b. 3 Aug 1842  
 p.b. Wright Co MO  
 d. 14 Nov 1914  
 p.d. Wright Co MO

12 Samuel B Scarborough  
(Father of No. 6)

b. 22 May 1839  
 p.b. Wake Co NC  
 m. 25 Dec 1867  
 d. 21 Aug 1906  
 p.d. Wright Co MO

13 Louisa Matilda Butcher  
(Mother of No. 6)  
 b. 27 Feb 1851  
 p.b. Wright Co MO  
 d. 26 Jul 1944  
 p.d. Wright Co MO

14 John Allen Robinett  
(Father of No. 7)

b. 23 Oct 1854  
 p.b. Wright Co MO  
 m. Ca 1877  
 d. 1938  
 p.d. Hartville MO

15 Bedia Alice Wood  
(Mother of No. 7)

b. Jul 1859  
 p.b. Carroll Co AR  
 d. 1942  
 p.d. Wright Co MO

16 William Elijah Lawson  
(Father of No. 8)  
 b. 20 Dec 1827  
(Cont. on chart No. \_\_\_\_\_)

m. Ca 1848  
 d. 17 Jul 1865, Plato MO  
 17 Clarissa Jane Thornhill  
(Mother of No. 8)  
 b. Mar 1833  
(Cont. on chart No. \_\_\_\_\_)  
 d. Mar 1926, Rayborn MO

18 Ransom S Clark  
(Father of No. 9)  
 b. 1827-GA  
(Cont. on chart No. \_\_\_\_\_)

m. 1847-Walker Co GA  
 d. Jan 1865, Nashville TN  
 19 Hetty Orlena Giddens  
(Mother of No. 9)  
 b. 1832 TN  
(Cont. on chart No. \_\_\_\_\_)  
 d. 907, Rayborn, MO

20 Zacheus Wilson  
(Father of No. 10)  
 b. 1814 KY  
(Cont. on chart No. \_\_\_\_\_)

m. Ca 1838  
 d. ?

21 Eliza Adamson  
(Mother of No. 10)  
 b. 1820 IN  
(Cont. on chart No. \_\_\_\_\_)  
 d. 1861-70

22 William Rufus Prock  
(Father of No. 11)  
 b. 1811 TN  
(Cont. on chart No. \_\_\_\_\_)

m. Ca 1841  
 d. 1865 Wright Co MO

23 Harriet Johnson  
(Mother of No. 11)  
 b. 1818 VA  
(Cont. on chart No. \_\_\_\_\_)  
 d. 1858 Wright Co MO

24 Samuel W Scarborough  
(Father of No. 12)  
 b. 1795 NC  
(Cont. on chart No. \_\_\_\_\_)

m. 1822  
 d. Mar 1854-Wright Co MO

25 Winneford Wall  
(Mother of No. 12)  
 b. 1800 NC  
(Cont. on chart No. \_\_\_\_\_)

d. 1871 Wright Co MO

26 Prior Butcher  
(Father of No. 13)  
 b. 1831 TN  
(Cont. on chart No. \_\_\_\_\_)

m. 28 Mar 1850  
 d. 25 Nov 1880 Wright Co MO

27 Mary (Polly) Owens  
(Mother of No. 13)  
 b. 1830 TN  
(Cont. on chart No. \_\_\_\_\_)  
 d. 18 Dec 1860, Wright Co MO

28 Jesse Robinett III  
(Father of No. 14)  
 b. 1816 NC  
(Cont. on chart No. \_\_\_\_\_)

m. Ca 1853  
 d. 1876, Wright Co MO

29 Amanda Bennett  
(Mother of No. 14)  
 b. 1821 MO  
(Cont. on chart No. \_\_\_\_\_)

d. 1891-Wright Co MO

30 Claiborn Foster Wood  
(Father of No. 15)  
 b. 1832 TN  
(Cont. on chart No. \_\_\_\_\_)

m. 18 Jul 1852  
 d. 19 Jul 1862-Wright Co MO

31 Mary Dedmon  
(Mother of No. 15)  
 b. 1834 AR  
(Cont. on chart No. \_\_\_\_\_)

d. 1909-Talmadge Wright Co MO

MUSKOGEE COUNTY GENEALOGICAL SOCIETY  
PUBLICATIONS FOR SALE

CEMETERIES OF MUSKOGEE COUNTY, OK, Vol. I \$11.50

Includes Agency, Bemo, Boynton, Brewer, Briartown, Brushy Mountain, Butler Creek, Council Hill, Doyle, Ft. Gibson/Anderson Bottom, Frozen Rock, Graves, Grayson, Plainview, Rock Grove, Starnes, Starr, Taylor, Walker, 2 Unidentified. 155 pages including index. Softbound.

CEMETERIES OF MUSKOGEE COUNTY, OK Vol. II \$27.00

Includes Harnage, Harris, Harris Family, Haskell, Jennings, Jobe Family, McClure, Middleton Chapel, Oktaha Community, Park, South Bethel, Summitt, 1 Unidentified. 291 pages including index. Softbound.

INDEX OF OBITUARIES AND DEATHS EXTRACTED FROM THE MUSKOGEE DAILY PHOENIX, 1954 - 1992.

- Vol. I - Surnames A - D. (11, 073 names, 201 pages) \$25.00
- Vol. II - Surnames E - K. (11,086 names, 203 pages) \$25.00
- Vol. III - Surnames L - R. (11, 648 names, 210 pages) \$25.00
- Vol. IV - Surnames S - Z. ( 9, 908 names - 180 pages) \$25.00

INDEX OF DEATHS EXTRACTED FROM MUSKOGEE DAILY PHOENIX, January 16, 1930 - May 4, 1935 \$ 5.00

MARRIAGE RECORDS, MUSKOGEE INDIAN TERRITORY FIRST U.S. COURT - NORTHERN DISTRICT, Books A, B, and B-1, July 1890 - March 1893. Mickey Hagan & Rae Lindsey. 108 pages including index \$11.00

GENEALOGICAL DATA EXTRACTED FROM MUSKOGEE WEEKLY PHOENIX, INDIAN TERRITORY, 1888 - 1892  
Sheri Sharpnack Siebold, 56 pages including index. \$ 8.00

GENEALOGICAL DATA EXTRACTED FROM MUSKOGEE WEEKLY PHOENIX, INDIAN TERRITORY, 1893 - 1897, Vol. II  
Sheri Sharpnack Siebold. 57 pages including index \$ 8.00

GENEALOGICAL DATA EXTRACTED FROM MUSKOGEE WEEKLY PHOENIX, INDIAN TERRITORY, 1898 - 1902. Vol. III  
Sheri Sharpnack Siebold. 65 pages including index. \$ 8.00

-----  
Send check or money order for price plus \$2.50 each book, for postage, to  
Green Leaf Publications  
c/o Gary Lester  
P.O. Box 134  
Braggs, OK 74423